

Community Engagement and Health Equity

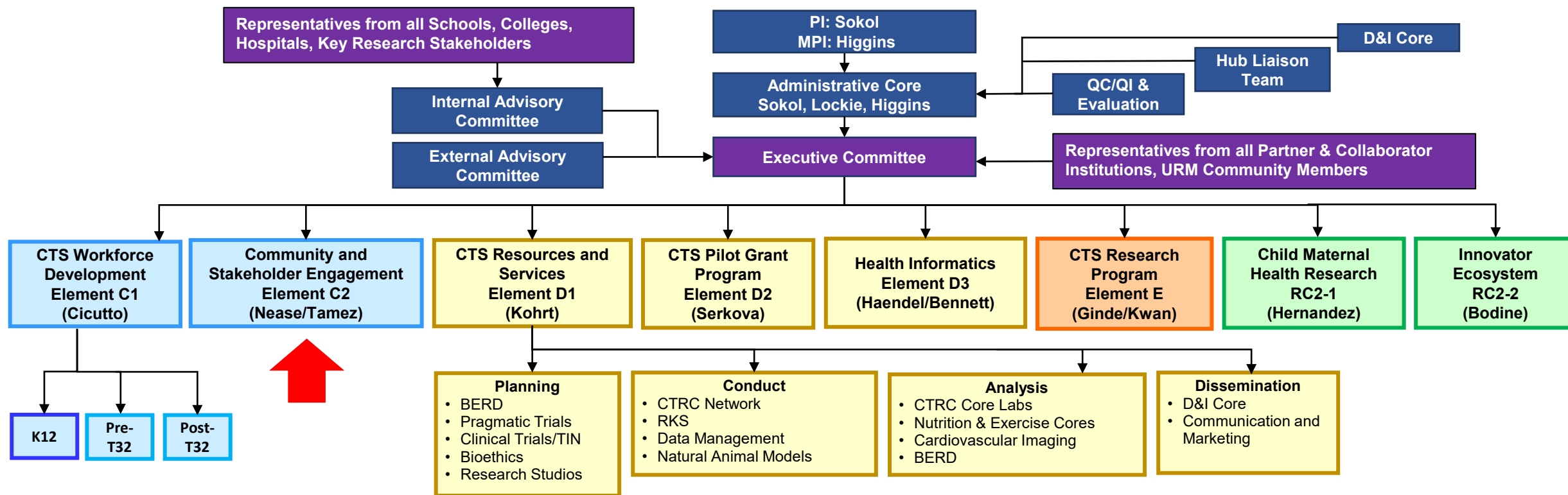
Donald Nease, MD

Director, Community Engagement and Health
Equity Core



Colorado Clinical and Translational
Sciences Institute (CCTSI)

UNIVERSITY OF COLORADO DENVER | ANSCHUTZ MEDICAL CAMPUS



Strategic Goals

- **Goal 1.** *Develop the capacity of investigators and research staff to equitably engage diverse communities and stakeholders in clinical and translational research.*
- **Goal 2.** *Develop the capacity of communities and stakeholders to equitably engage with investigators and staff in clinical and translational research.*
- **Goal 3.** *Establish, build and maintain trust with communities and stakeholders through return of results, and interpretation and dissemination of results in partnership with communities and stakeholders.*
- **Goal 4.** *Continuously evaluate and improve our capacity development activity on campus and in communities by measuring and monitoring our impacts on equitable engagement and involvement with diverse communities and stakeholders in clinical and translational research.*



Approach and Innovation

Goal 1: Develop the capacity of investigators and staff to equitably engage and involve diverse communities and stakeholders in clinical and translational research.

Goal 1a: Develop and provide annual training for *research coordinators and staff* in Diversity, Equity and Inclusion and Community Engagement.

- Training will cover aspects of health equity, historical structural racism with respect to research and basic skills in community engagement
- Partner with leadership from the CCTSI and the Clinical Research Support Center to develop and implement this curriculum.
- Training will be led by CEHE staff and CRLs with guest community speakers.



Approach and Innovation

Goal 1b: Expand the capacity of our existing program for training investigators in Diversity, Equity and Inclusion and Community Engagement.

- Expand the capacity of Colorado Immersion Training (CIT) by charging tuition, asking applicants' Departments or Divisions to pay 80% of the cost of participation.
- Provide scholarships to highly qualified applicants who are unable to access tuition funding.
- Explore offering CIT as a formal course in the School of Public Health and as part of the Latino/a Health Certificate program in partnership with the CU Latino/a Research and Policy Center.



Approach and Innovation

Goal 1c: Expand the reach of the Community Clinical Trials Advisory Board (CCTAB) beyond COVID-19 related trials.

- CCTAB was created for CO-CEAL to address the needs of investigators proposing or implementing COVID-19 related clinical trials in the community setting.
- Includes of a mix of community and academic members who consult with investigators on recruitment of diverse populations.
- Expand access to any investigator conducting a clinical trial that holds meaning for underserved communities and that addresses a clinical topic where diverse and inclusive enrollment is sought or required.



Approach and Innovation

Goal 2: Develop the capacity of communities and stakeholders to equitably engage with investigators and staff in clinical and translational research.

Goal 2a: Expand the development and implementation of programs to *train Community Based Organizations (CBOs) and their staff* to design organizational strategies and policies related to research and to equitably partner with researchers in community settings.

- Finalize and implement Research Readiness for CBOs program, which prepares CBOs to participate in research as full partners
- Training includes principles of Community Based Participatory Research (CBPR), partnership development, trust, equity, data use and ownership, and developing organizational plans, policies & procedures to guide strategic research efforts.



Approach and Innovation

Goal 2b: Promote the development and implementation of programs to train *individual community members* to partner in the development and conduct of research in community settings.

- Companion training to Research Readiness for CBOs.
- Designed to introduce the community member to research fundamentals and prepare them to participate as community-based members of a research team.
- This ten-hour training will equip participants with a basic understanding of recruitment, consent and data collection and management as well as formal human subjects research training.



Approach and Innovation

Goal 2b: Promote the development and implementation of programs to train *individual community members* to partner in the development and conduct of research in community settings.

- Pilot tested HSR training for community members through our CO-CEAL program
- Training occurs over a half day and addresses key elements of the Belmont Report and other protection of human subjects issues including data security, ethical conduct and historical research abuses.



Approach and Innovation

Goal 3: Establish, build and maintain trust with communities and stakeholders through return, interpretation, and dissemination of results in partnership with communities and stakeholders.

- Ensure that research results are equitably shared with communities that participate in the research and that communities participate in the interpretation and dissemination of the results.
- Return research results to communities through community events, making the data available to them and including our Community Connectors in efforts to disseminate results both locally and nationally at conferences.



Approach and Innovation

Goal 4: Continuously evaluate and improve our capacity development activity on campus and in communities by measuring and monitoring our impacts on equitable engagement and involvement with diverse communities and stakeholders in clinical and translational research.

- Hold regular key informant interviews to elicit feedback from CU-Anschutz campus partners, Partnering Institutions and community stakeholders.
- Use OnCore & Clinical Trial Monitoring Committee to track whether participants in clinical trials are more likely to match in their enrollment to the demographics of Colorado or exceed representation of disproportionately impacted racial, ethnic and rural populations when their investigators and staff have participated in our trainings.
 - Monitor and inquire about recruitment rates and assess actively through feedback from the community regarding their engagement and partnership.



Expected Outcomes and Impact

| Strategic Goal | Outcomes |
|---|--|
| Goal 1. Develop the capacity of investigators and research staff to equitably engage diverse communities and stakeholders in clinical and translational research. | <ul style="list-style-type: none"> • Annual training for all <i>research coordinators and staff</i> in Diversity, Equity and Inclusion and Community Engagement • Increased participation in CIT from 8-10 per cohort to 15 per cohort • Adapted CIT for COSPH and Latino Certificate |
| Goal 2. Develop the capacity of communities and stakeholders to equitably engage with investigators and staff in clinical and translational research. | <ul style="list-style-type: none"> • Research Readiness for CBOs curriculum • Research Readiness for Individuals curriculum • Expanded use of Community Clinical Trials Advisory Board |
| Goal 3. Establish, build and maintain trust with communities and stakeholders through return of results, and interpretation and dissemination of results in partnership with communities and stakeholders. | <ul style="list-style-type: none"> • Research results are interpreted and disseminated in partnership with community |
| Goal 4. Continuously evaluate and improve our capacity development activity on campus and in communities by measuring and monitoring our impacts on equitable engagement and involvement with diverse communities and stakeholders in clinical and translational research. | <ul style="list-style-type: none"> • Metrics showing the extent to which investigators' participation in CEHE programs and services improve representation of disproportionately impacted racial, ethnic and rural populations in their Clinical Trials and research projects. |



Impact

The current CTSA FOA calls on the CEHE Core to address roadblocks to translating discovery into practice in communities that suffer health inequities through the following:

- Collaboration with and engagement with stakeholders in all aspects of CTS research
- Acceleration of CTS research to address the significant burden of conditions that disproportionately affect rural, minority, and other underserved populations
- Application of a health equity framework to CTS
- Participation of underserved populations and research participants as full collaborators early and often throughout the process



Programs Addressing NCATS CTSA Objectives & Areas of Emphasis

| NCATS CTSA Objectives & Areas of Emphasis | Corresponding CCTSI Community Engagement Activities |
|---|--|
| Develop, demonstrate, and disseminate innovations that turn science into medicine faster | <ul style="list-style-type: none"> • Community (Boot Camp) Translation • Community Engagement Pilot Grant Program (CE Pilot) • SNOCAP's 23 active practice-based research projects (\$23.7 million in funding) |
| Promote impactful partnerships and collaborations | <ul style="list-style-type: none"> • Partnership of Academicians and Communities for Translation (PACT Council) • Community Research Liaison Program • Trailhead Institute Partnership • Community Clinical Trials Advisory Board |
| Address health disparities | <ul style="list-style-type: none"> • Research Readiness; CE Pilot Grants addressing health disparities • Older Adult Research Specialist Training Collaboration • Mandatory DEI Trainings for CCTSI Staff |
| Provide a national resource for the rapid response to urgent public health needs | <ul style="list-style-type: none"> • Colorado Community Engagement Alliance Against COVID 19 Disparities • SNOCAP practice-based research networks' COVID-19 sentinel surveys • Research Readiness • Community Research Liaison Training Framework |
| Promote training and career support | <ul style="list-style-type: none"> • Colorado Immersion Training in Community Engagement • Technical Assistance and Coaching for CE Pilot Awardees • Quarterly CU Campus Community Engagement Forums • Community (Boot Camp) Translation Facilitation Training • Community Engagement Training for Researchers Public Health Professionals • Community Engagement Consultation Service |
| Nurture field of translational science | <ul style="list-style-type: none"> • Community Engagement Pilot Grant Program (CE Pilot) • Participation in Team Science Competencies Workgroup |



DEIA and Health Equity

The CEHE program will advance health equity through translational science by:

- Ensuring that our institutional systems, structures, policies and practices are guided by values rooted in health equity.
- Investing in capacity within our campus and community stakeholders.
- Ensuring that clinical and translational science is conducted in partnership with diverse populations.
- Building and expanding on the foundation of innovative approaches that we have developed over the past 14 years.



Metrics and Evaluation

- Increased engagement of underserved populations in studies led by investigators who have participated in CEHE programs and services *as measured by trial enrollment*
- *Participation ##s* in CEHE education and training programs
- Community Research Liaison *tracked activity and reach*
- *## of applications and funded* CEHE pilot grants
- *CEHE Pilot grant ROI*
- Community & Campus Stakeholder satisfaction with resources and services



Integration and Collaboration

- Community engagement is a foundational component of the CCTSI infrastructure that provides training, consultation and connection to diverse communities as a resource for all cores.
- Additional specific collaborations are planned or ongoing with the following cores/programs:
 - Workforce Development
 - CTS Resources and Services
 - Pilot Grants
 - Maternal and Child Health
 - Health Informatics
 - Dissemination and Implementation



National CTSA Consortium Collaborations

National CTSA Consortium Involvement

- Don Nease:
 - Virginia Commonwealth University CTI's EAC
 - Collaboration & Engagement DTF working group on Health Disparities
- Ongoing partnerships with:
 - CEAL
 - Univ. of New Mexico – AHRQ EvidenceNOW & PRIMENet Collaborative
 - Oregon Health Sciences Univ. – AHRQ MetaLARC Collaborative
 - Univ. of Wisconsin – AHRQ MetaLARC Collaborative
 - UCSF –AHRQ PRIMENet Collaborative
 - Duke – AHRQ MetaLARC Collaborative
 - Univ. of Iowa – AHRQ MetaLARC Collaborative
 - Univ. of Kansas – NCATS U01



Response to EAC Critiques

CRL payment and support has remained unchanged for over a decade. It is important to increase their pay and invest in the program to demonstrate that the CCTSI equally values their work and contributions.

- 20% pay increase has been approved beginning in 2023 along with an annual cost of living increase



Response to EAC Critiques

With the new Hispanic Serving Institution (HSI) designation and numerous Hispanic communities throughout Colorado, consider additional opportunities to engage new communities and support CTS in addressing their needs.

- CE Deputy Director is on the HSI task force
- A modified version of CIT will be incorporated into the Latino Health Certificate Program
- Additional resources are needed to expand our reach into other communities



Response to EAC Critiques

There is an opportunity to better integrate data analytics and community engagement efforts as a tool to guide CTS work.

- Use OnCore to track whether participants in clinical trials are more likely to match in their enrollment to the demographics of Colorado or exceed representation of disproportionately impacted racial, ethnic and rural populations when their investigators and staff have participated in our trainings.



Response to EAC Critiques

The EAC suggested the CCTSI leadership ensure the community engagement team had some additional more flexible dollars to enable more rapid response to the needs of the program and priorities of the community.



Questions for EAC

- Have we addressed Health Equity and Disparities adequately?

