

colorado school of
public health

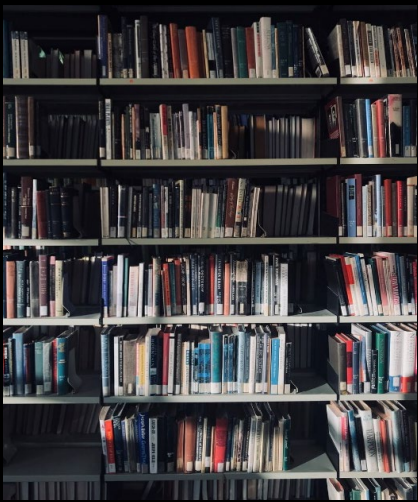
UNIVERSITY OF COLORADO
COLORADO STATE UNIVERSITY
UNIVERSITY OF NORTHERN COLORADO

PRACADEMIC WORK AS A PATHWAY TO POLICY CHANGE

CCTSI CU-CSU Summit X

September 14, 2022

Dr. Molly J. Gutilla



Alumni
Midwest Native
Bread Baker
Lifelong Learner/Teacher
Bike rider
Trail runner
Parent
Public Health
Pracademic

Molly J. Gutilla, DrPH (she/her)
Health and Exercise Science
Colorado State University
Colorado School of Public Health

Photo credit: my iphone and <https://unsplash.com/>

1. What is a pracademic?
2. How I work as one
3. Why we need more

Molly J. Gutilla, DrPH
Health and Exercise Science
Colorado State University
Colorado School of Public Health

► GUEST COMMENTARY

I Am an Environmental Health Pracademic (And So Can You!)

Ken Runkle, MA, DPA, REHS

With apologies to Stephen Colbert for the title above (Colbert, 2009), let me confess that I am an environmental public health pracademic. What's a pracademic? I'm glad you asked.

Popularized by Paul Posner in the field of public administration, a pracademic is a person who spans the boundaries between practitioners and academics in ways that "enrich both theory and practice (Posner, 2009)." Roles range from practitioners who supervise internships, to practitioners who teach, train, or serve on college advisory boards, to academics who practice and conduct environmental health research. These are all roles

Additionally, EHAC requires that each accredited program have an advisory committee that typically has members who are practitioners from both public and private sectors of environmental health. Programs benefit from an active and knowledgeable advisory team of pracademics working in public health agencies and businesses because they can see the academic program from a practitioner's perspective and help ensure the curriculum is appropriate for preparation for careers in the environmental health field (EHAC, 2013).

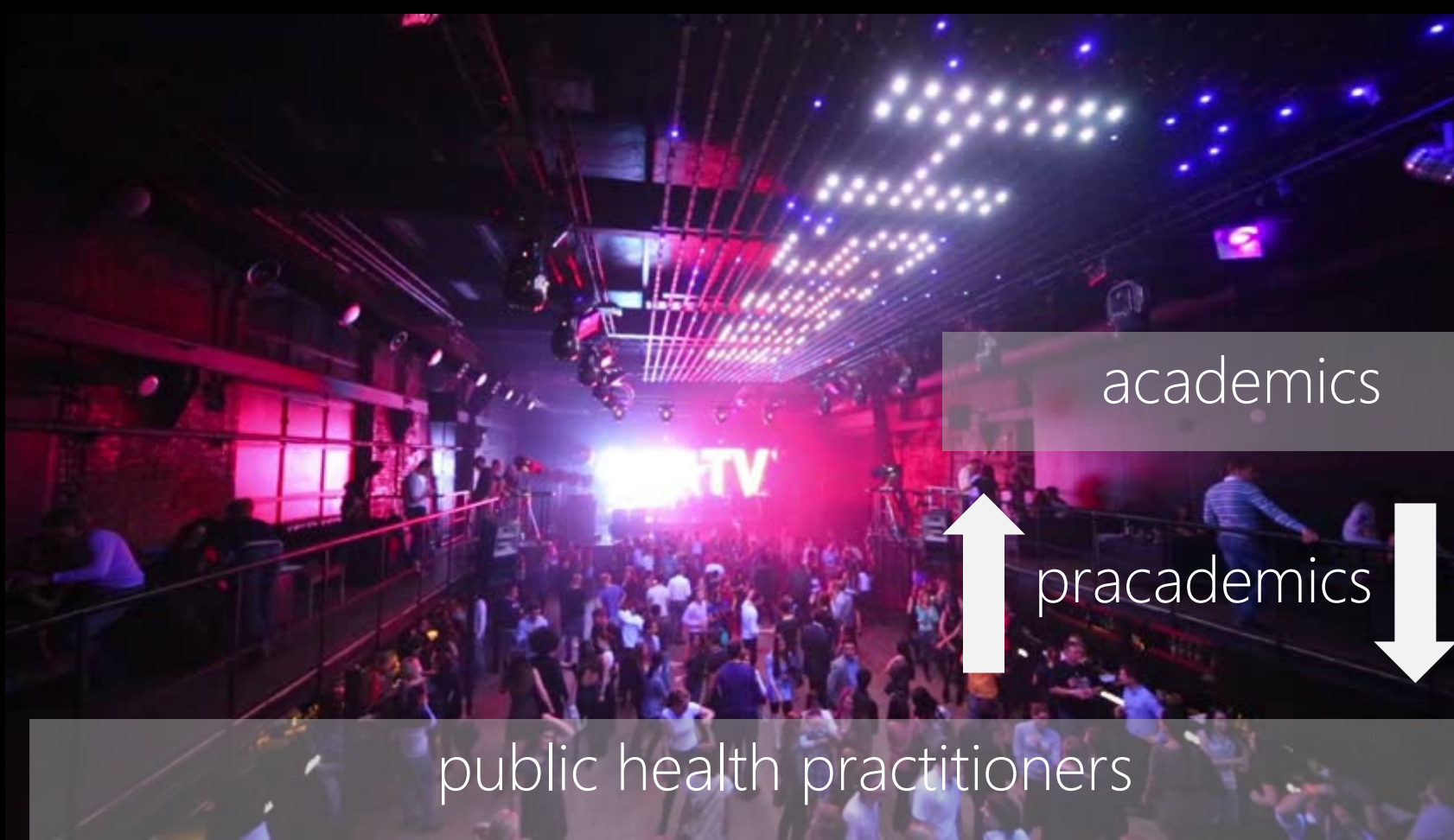
Jessica Thoron, food program supervisor for the Sangamon County Health Department in Springfield, Illinois, is a local pracademic. She

department and pool safety visits with state inspectors. The photos and stories obtained from the field help make class lectures timely, practical, and more real to my students.

At UIS, pracademics serve as adjunct faculty teaching courses in the MPH curriculum as need arises. While working at IDPH, I had the opportunity to teach environmental and occupational health each spring semester for 17 years. An IDPH deputy director has taught public health policy, an IDPH epidemiologist has taught epidemiology, an IDPH health assessor has taught environmental risk assessment, a CDC public health advisor has taught online courses, and an environmental communica-

What is a pracademic?





pracademics

1. People who **appreciate** the benefits of solving **real-world challenges** by combining practitioner and academic perspectives
2. Someone whose work as a practitioner **draws** heavily on academia, or whose academic work is closely **connected** to the practitioner's world

Real World Public Health Challenges

**RACISM IS
A PUBLIC
HEALTH
CRISIS**

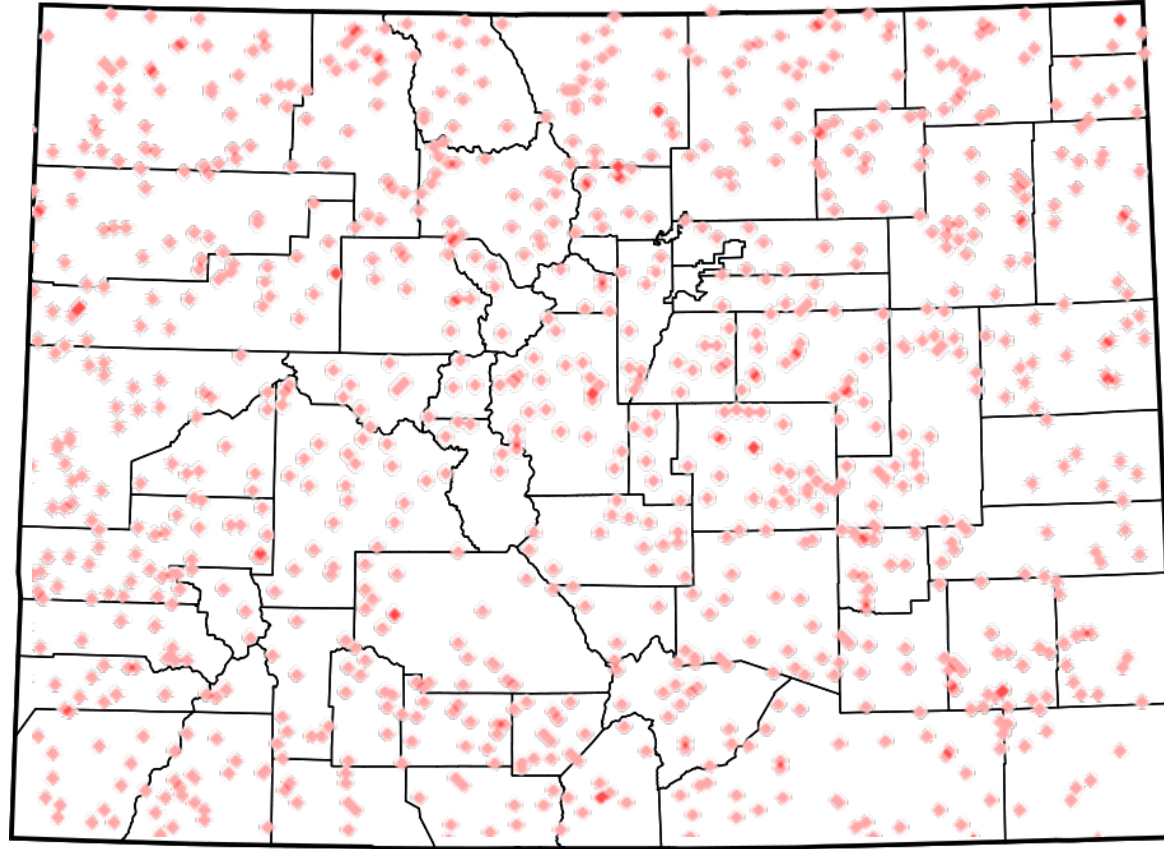
ASPPH



**Coronavirus
Disease 2019
(COVID-19)**



Health is Not Random



Thinking



Pracademics
do both



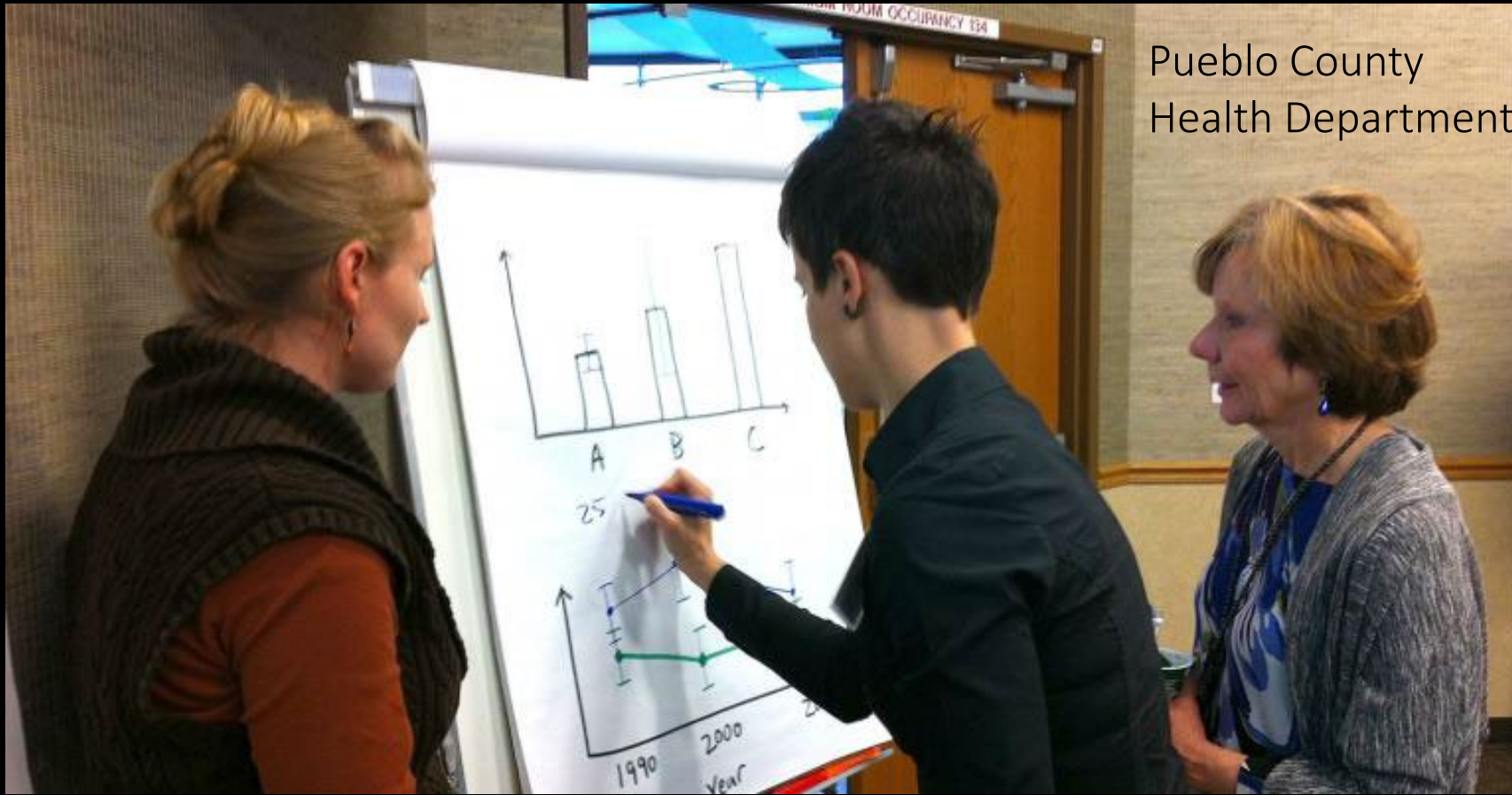
Doing

Academics

Develop explicit
knowledge
(formal,
systematic)

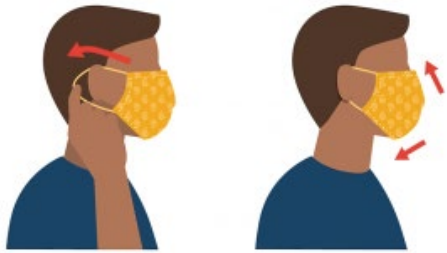
Practitioners

Develop tactical
knowledge
(observational,
anecdotal)



How I work as a pracademic

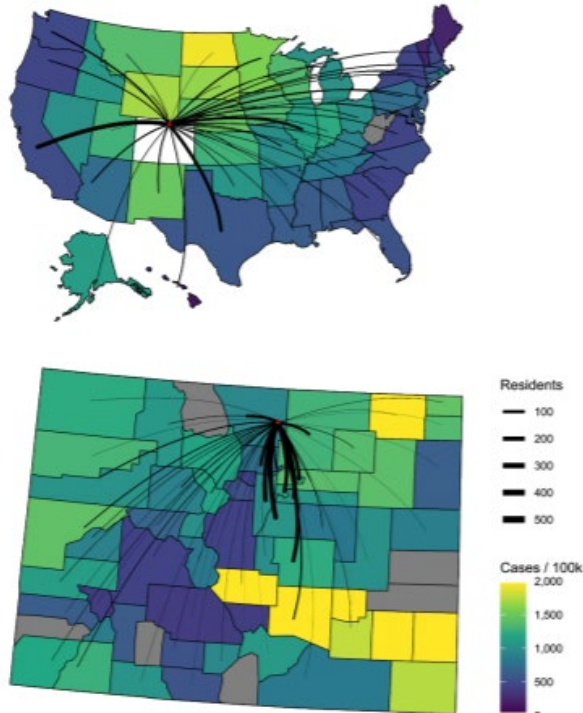
1



Observed Face Mask Use at
Sixty-Six Universities,
Spring 2021

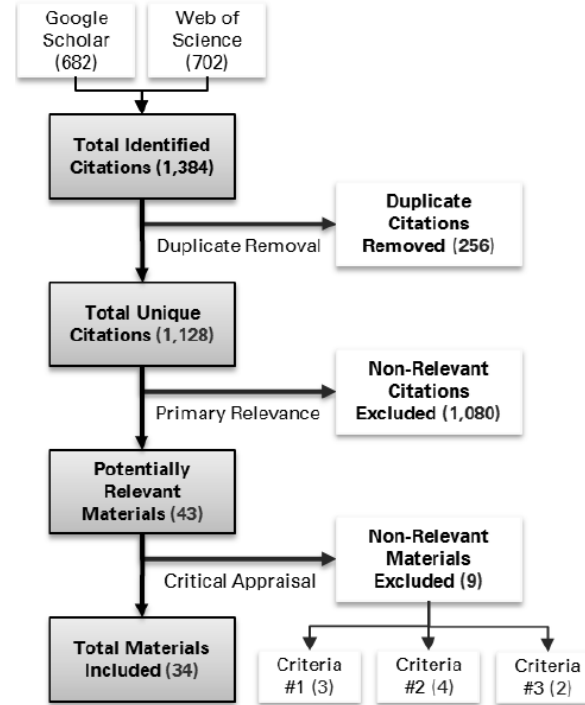
2

Post Fall Break



Estimating COVID-19 Cases on
University Campuses Prior to
Semester

3



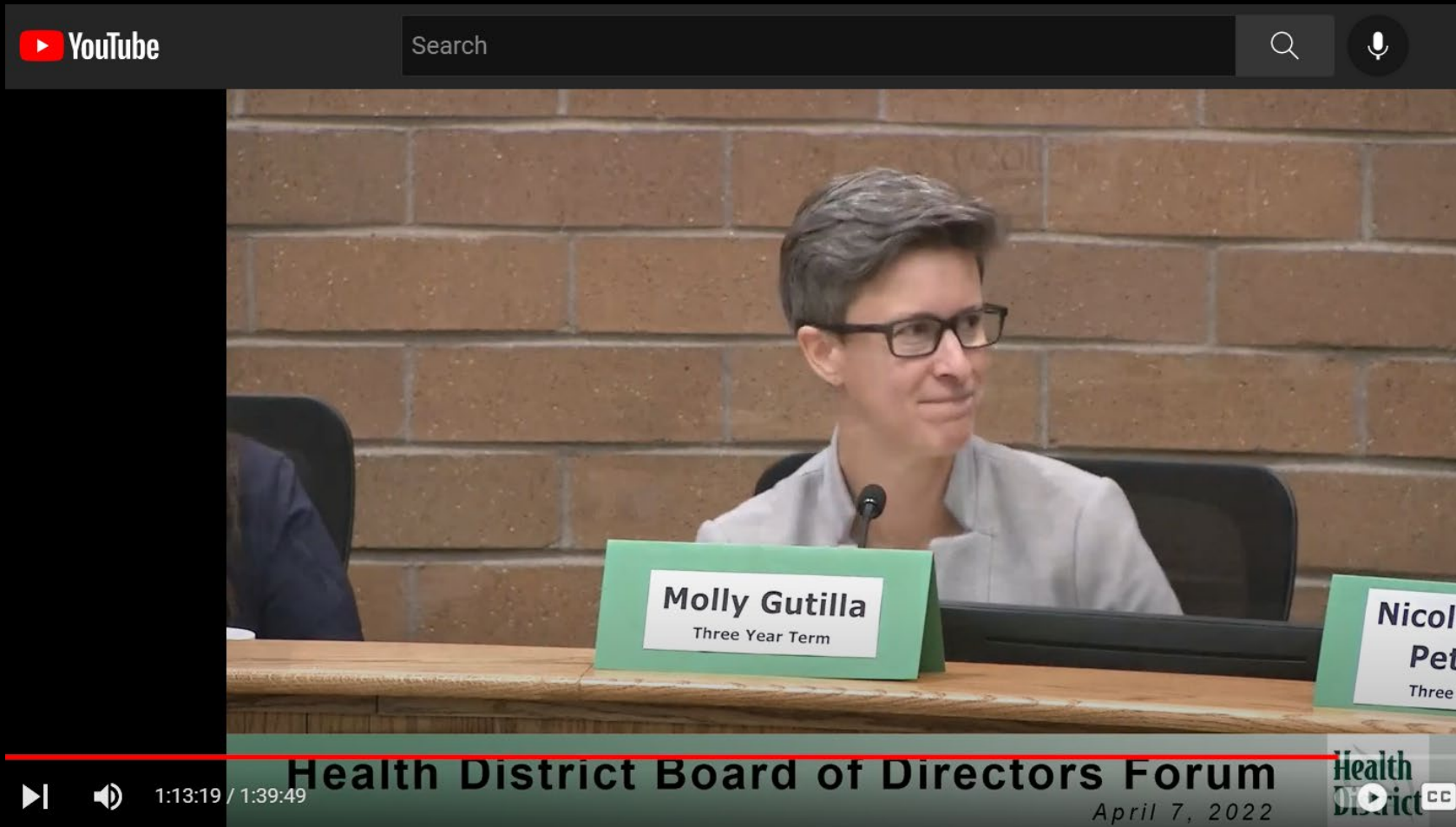
Application of Systems Approaches
in Governmental Public Health

Practitioner-driven research questions:

1. Where is safe?
2. What should we prepare for?
3. How are we doing our work?

-
1. How do we prevent DUIs?
 2. How can we address childcare as a public health issue?

How I work as a pracademic

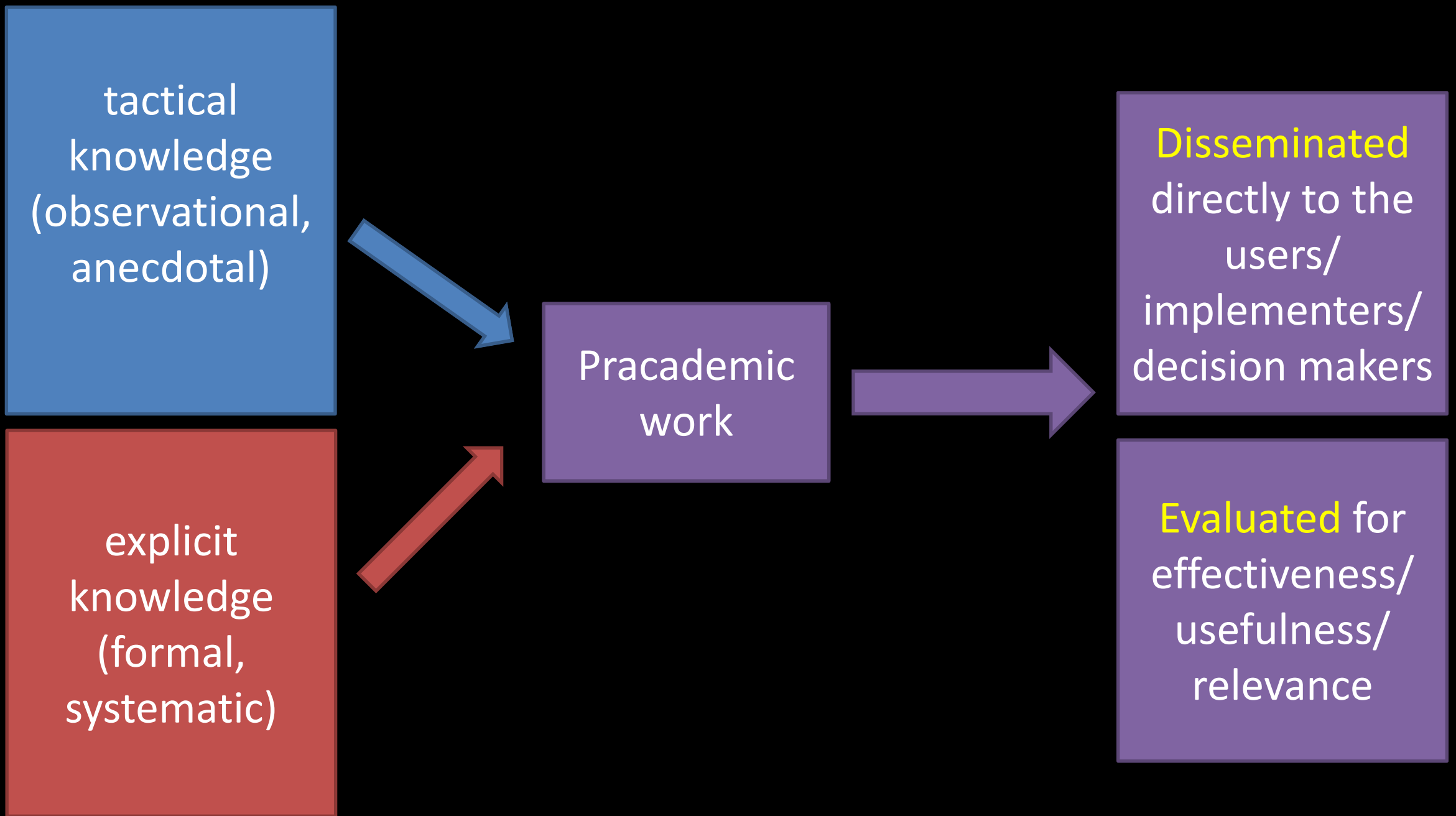


Become a decision-maker.

or

Learn who the decision-makers are and form a relationship with them.

How I work as a pracademic





Why we need more pracademics



Michigan Journal of Sustainability

SUSTAINABILITY.UMICH.EDU/MJS

Delivering On Science's Social Contract

JANE LUBCHENCO

Department of Integrative Biology, Oregon State University, Corvallis, OR 97331

Volume 5, Issue 1

<http://dx.doi.org/10.3998/mjs.12333712.0005.106>

Academic positions
come with:

Challenge

Privilege

In return, we agree to:

Improve our world,

Be a part of the
community



PUBLIC HEALTH PRACADEMICS



Public Health Pracademics will explore the intersection between academia and practice with an eye toward recognizing those already bridging this gap and encouraging others to embrace efforts to link science and practice.

Search ... 

NEW IMPACT FACTOR FOR JPHMP!



[Click Image for More Info](#)

VISIT OUR LEADERSHIP LIBRARY!



Questions?
Conversation?