



University of Colorado
Anschutz Medical Campus

The Anschutz Health Sciences Building

Construction Update
11 November 2019

CAAICON

- 
- Construction Status
 - Accomplishments to Date
 - Upcoming Activities
 - LEED – Waste Diversion

Agenda

Project Leadership and Staff



Doug Wilson, Project Director
doug.wilson@caaicon.com

Daniel Loosbrock, Project Executive
daniel.loosbrock@caaicon.com



Eric Snelling, General Superintendent



University of Colorado
Anschutz Medical Campus

David Turnquist, Associate Vice Chancellor
Facilities Management

Michael Barden, Director
Facilities Projects

Ethan Carter, PhD, Director
Department of Environmental Health and Safety

Breanne Beck, Senior Industrial Hygienist
Department of Environmental Health and Safety

LoriAnn Smith, Associate Director
University Risk Management

An aerial photograph of a large university campus, showing numerous academic buildings, parking lots, and green spaces. The image is in grayscale. Overlaid in the center is the text "Construction Status" in a large, bold, black sans-serif font.

Construction Status



Concrete Pours

7 of 7 V Columns

Level 2 Pours 1, 2 & 3

Level 3 Pour 1

Slab on Grade North

Elevator and Stair Cores



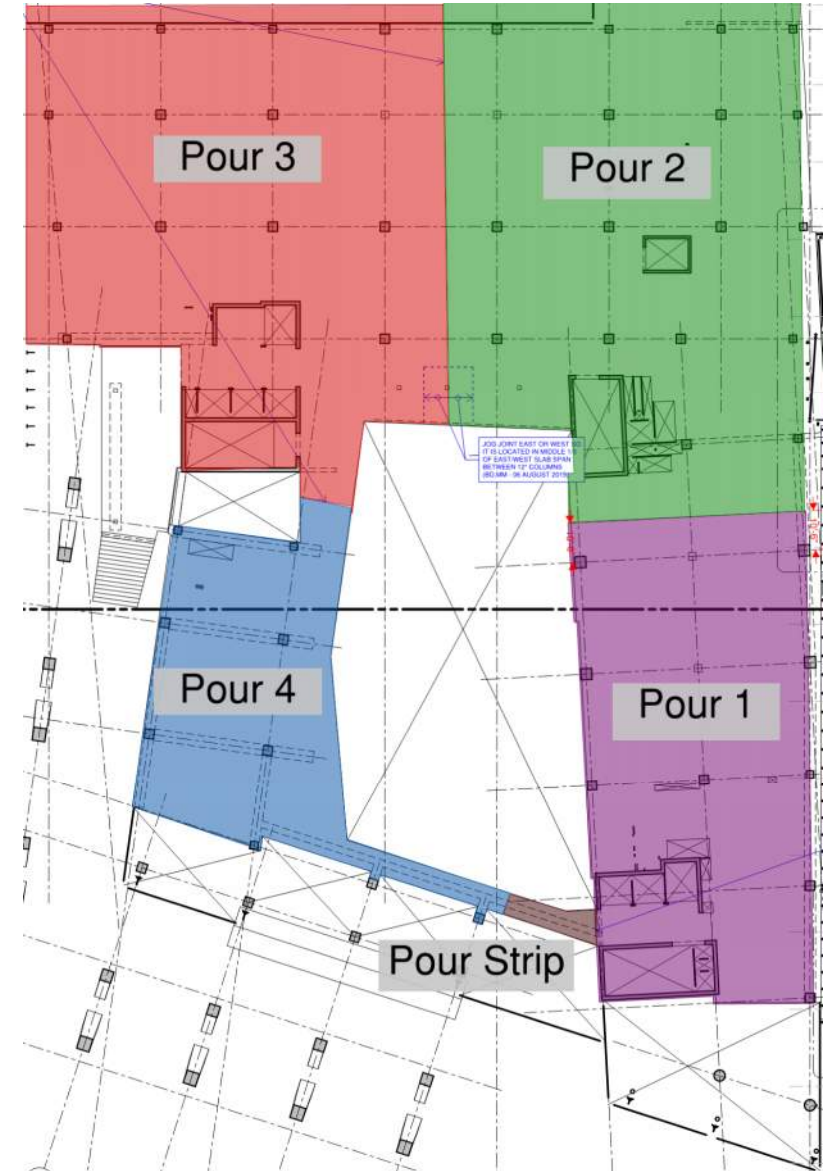
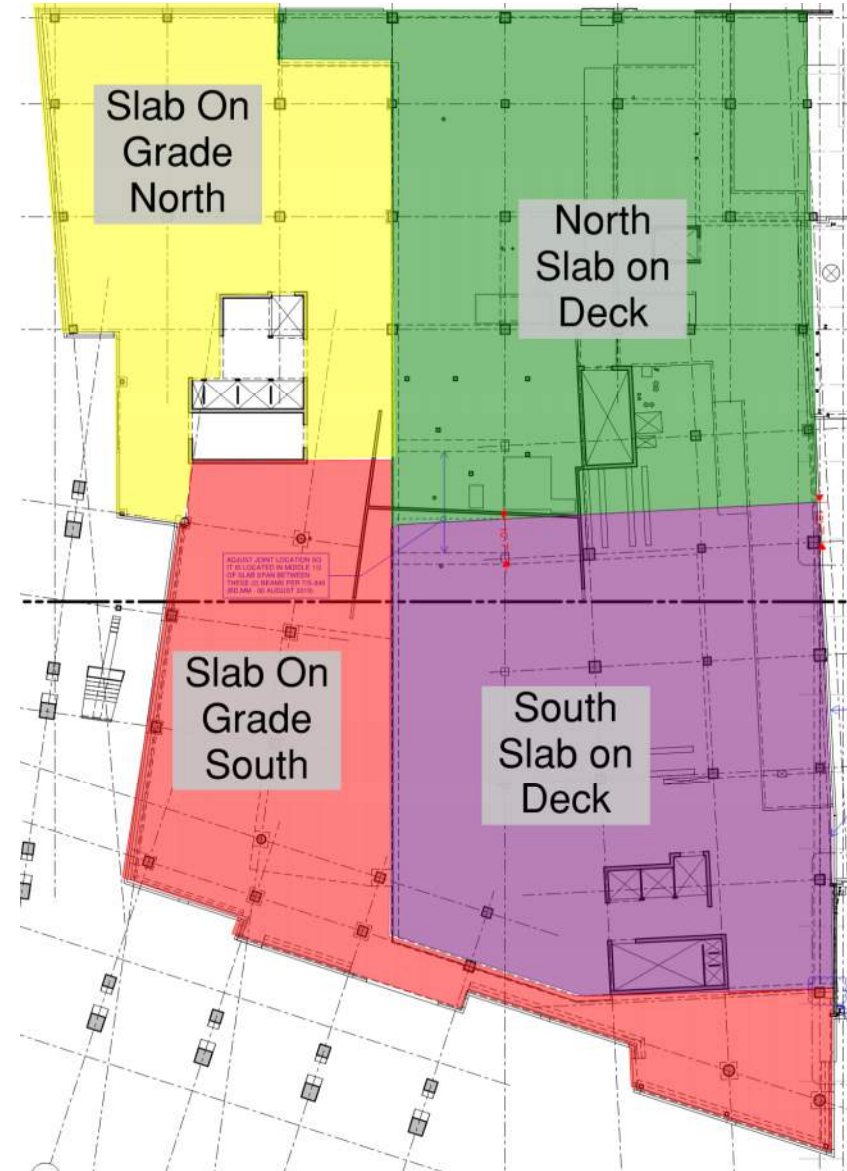


An aerial, grayscale photograph of a large university campus. The image shows a dense collection of academic and administrative buildings, interspersed with green spaces, trees, and parking lots. A major road or highway runs horizontally across the upper portion of the image. The text "Upcoming Activities" is centered over the middle of the campus.

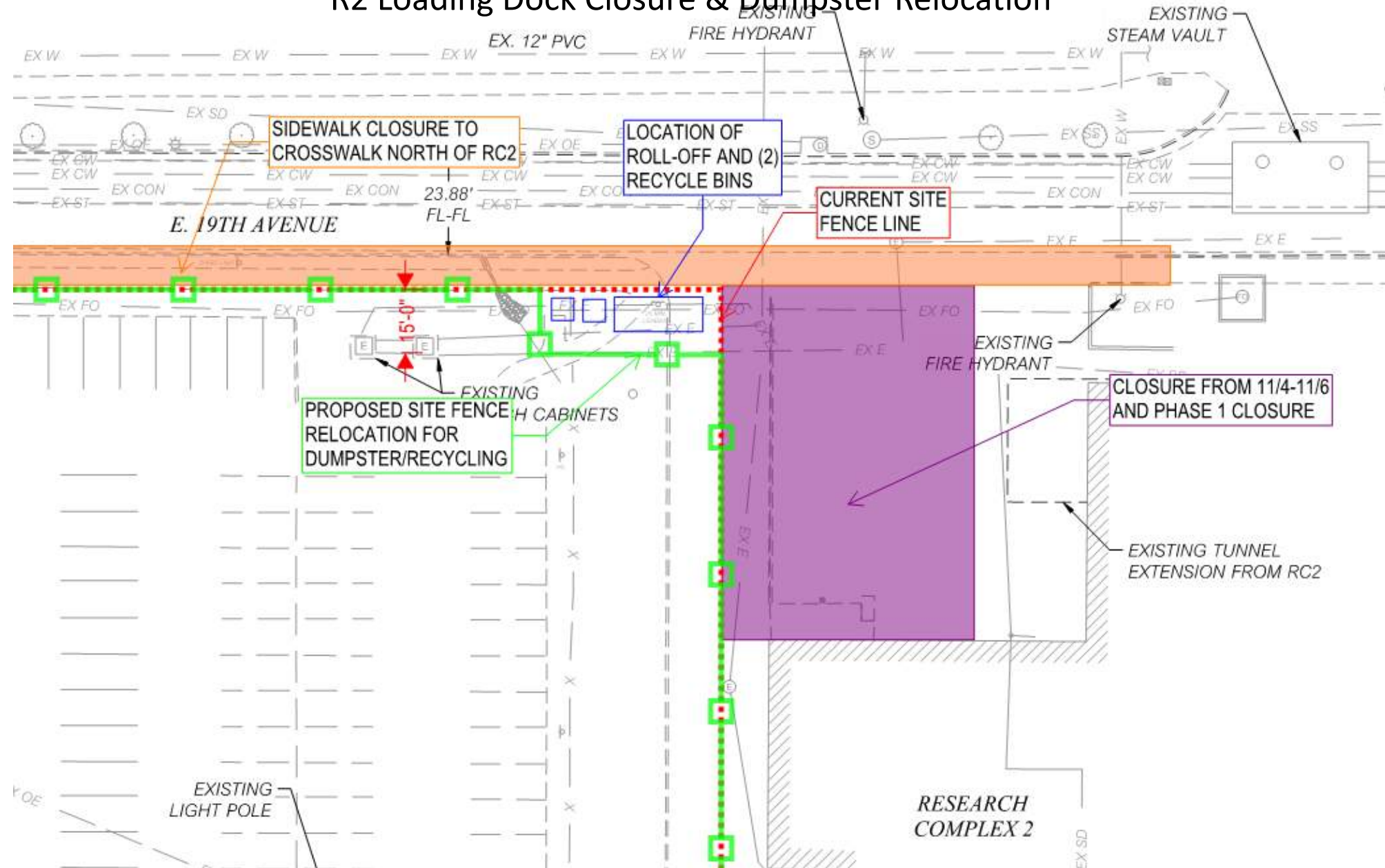
Upcoming Activities

Upcoming Activities

- Level 2 Pour 4
- Framing and Decking of Level 3 Pour 2
- Level 3 Pour 2
- Continued reinforcing, along with Plumbing and Electrical coordination.
- Ongoing design for AHSB Basement Build-out.
- Onboarding balance of subcontractor workforce.
- Equipment Procurement




R2 Loading Dock Closure & Dumpster Relocation



An aerial photograph of a city, likely a university campus, showing various buildings, roads, and green spaces. The image is in grayscale. Overlaid on the center of the image is the text "LEED – Waste Diversion" in a large, bold, black sans-serif font.

LEED – Waste Diversion

Green Badger – Tracking Tool

 MORGAN DOTY ▾

☰ / Projects

Active

Archive

↓₂Name

↓₁Date

+ Add

Signed in successfully. ×

AHSB v4 BD+C

Activity

Edit

Leave Project

1890 N Revere Ct.
Aurora , CO No zip , US

28 %

Complete

Administrator Jimmy Kaczmarek

Duration Jan 30, 2019 — Nov 01, 2021

Team Members jimmy.kaczmarek@jedunn.com rachel.brashear@jedunn.com charlie.slattery@jedunn.com
susanna.marshall@jedunn.com aimee.bassett@jedunn.com matt.ewertz@jedunn.com morgan.doty@caaicon.com
bwilliams@amdarchitects.com doug.wilson@caaicon.com courtney@francesustainable.com clayton.butler@jedunn.com



Construction Waste Tracking

GRN BADGER

Projects

▼ AHSB v4 BD+C

Construction Waste Recycling ▼

MRc5

Tons ▼

Total waste

1359.555 tons

Total waste diverted

1359.555 tons

Total number of material streams

2 w.s.

Filter by tag:

Select tag ▼

Clear

Filter

Material	Material Description	Material Stream	Total Waste	Diverted Waste	Demolition Waste	Hauler / Location
Asphalt	Existing Site Pa...	Salvaged	411.075	411.075	Yes	Laydown area off Peoria and Montview
Concrete	Existing Site Co...	Recycled - source sepa...	23.84	23.84	Yes	Allied Recycled Aggregates/P.O. Box 566 Commerce City, CO 80037-0566

Loader Bucket size (CY)	3.5	The average scoop size is about 3.5 Cubic Yards
Scoops per truck	2	Two Scoops per truck in a tandem truck. Aim for 7CY
Weight of Asphalt (Pounds)	3915	Weight of Asphalt
Weight on trucks (Tons)	13.7025	((7 Cubic Yards) x (3915 Pounds)) / 2000 pounds per ton
Number of Truck Loads	30	Number of Loads of Asphalt salvaged
Total Weight Asphalt (Tons)	411.075	26 truck loads x 13.7025 tons = 411.075 tons

An aerial, grayscale photograph of a large university campus. The image shows a dense arrangement of academic and administrative buildings, interspersed with green spaces, trees, and parking lots. A major road or highway runs along the left side of the campus. The overall layout is organized and sprawling.

Reminders

- Next Town Hall
 - December 2nd at 11:00am
- Information can be found on the Facilities Active Projects website:
<http://www.ucdenver.edu/about/departments/FacilitiesManagement/FacilitiesProjects/ActiveProjects/Pages/AnschutzHealthSciencesBldg.aspx>
- Contact Information
 - Doug Wilson, doug.wilson@caaicon.com
 - Dan Loosbrock, dan.Loosbrock@caaicon.com

An aerial photograph of a large university campus. The image shows a dense collection of academic buildings, some with modern architectural features like curved facades. There are several large parking lots filled with cars, green spaces with trees, and a network of roads and walkways. The overall scene is a comprehensive view of a higher education institution's grounds.

Questions?