




University of Colorado
Anschutz Medical Campus

The Anschutz Health Sciences Building

Construction Update
02 December 2019

CAAICON

- 
- Construction Status
 - Accomplishments to Date
 - Upcoming Activities
 - R2 Loading Dock
 - LEED Scorecard

Agenda

Project Leadership and Staff



Doug Wilson, Project Director
doug.wilson@caaicon.com

Daniel Loosbrock, Project Executive
daniel.loosbrock@caaicon.com



Eric Snelling, General Superintendent



University of Colorado
Anschutz Medical Campus

David Turnquist, Associate Vice Chancellor
Facilities Management

Michael Barden, Director
Facilities Projects

Ethan Carter, PhD, Director
Department of Environmental Health and Safety

Breanne Beck, Senior Industrial Hygienist
Department of Environmental Health and Safety

LoriAnn Smith, Associate Director
University Risk Management

An aerial photograph of a large university campus, showing a dense arrangement of academic buildings, dormitories, and green spaces. The image is in grayscale, with the text 'Construction Status' overlaid in the center. The campus features a grid-like street pattern, numerous parking lots, and several large, modern buildings. The text is in a large, bold, black font, centered horizontally and vertically.

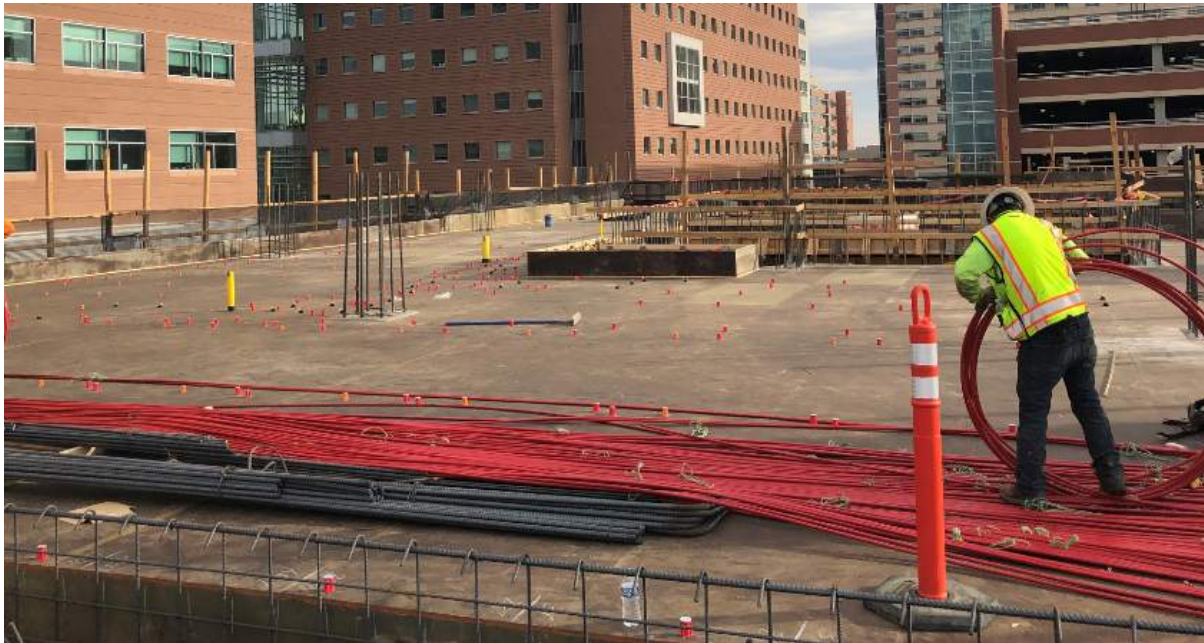
Construction Status



Status

Level 2 Concrete Pours
Form Deck - Level 3 Pour 2
Vertical – Level 3 Pour 1
Ongoing - Elevator and Stair Cores



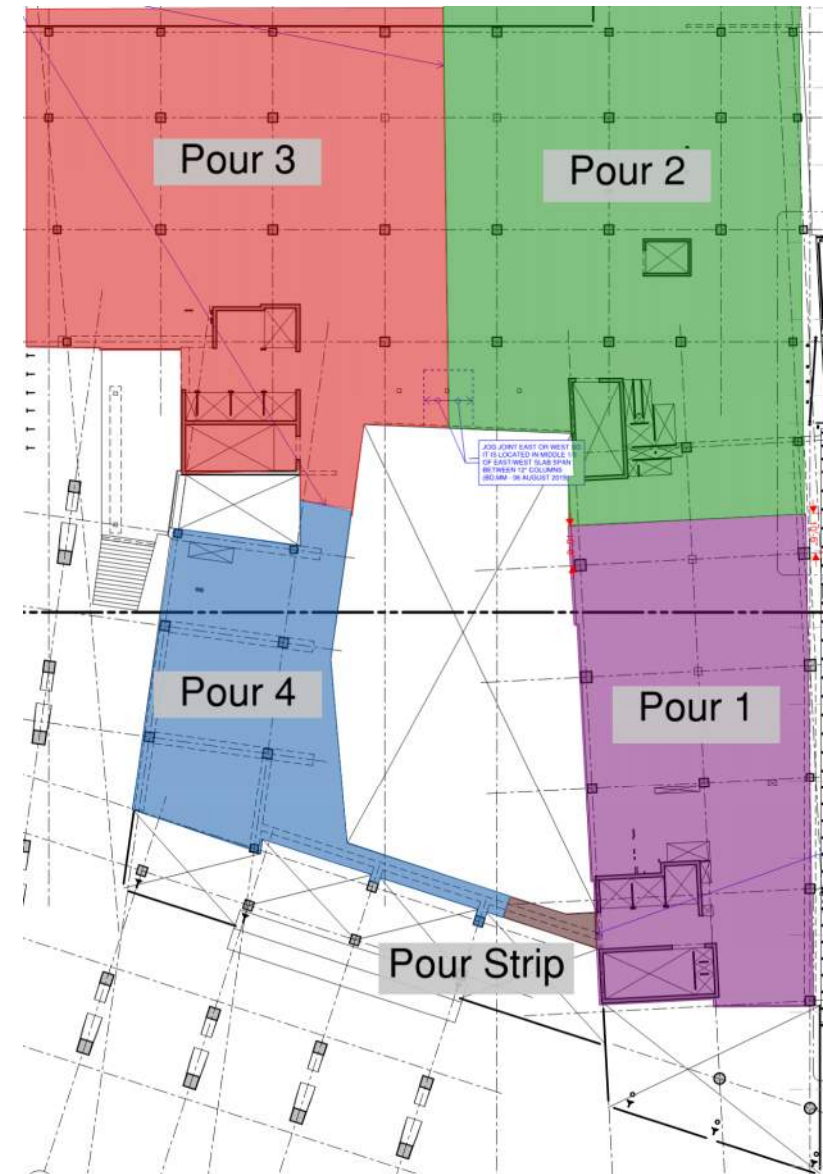
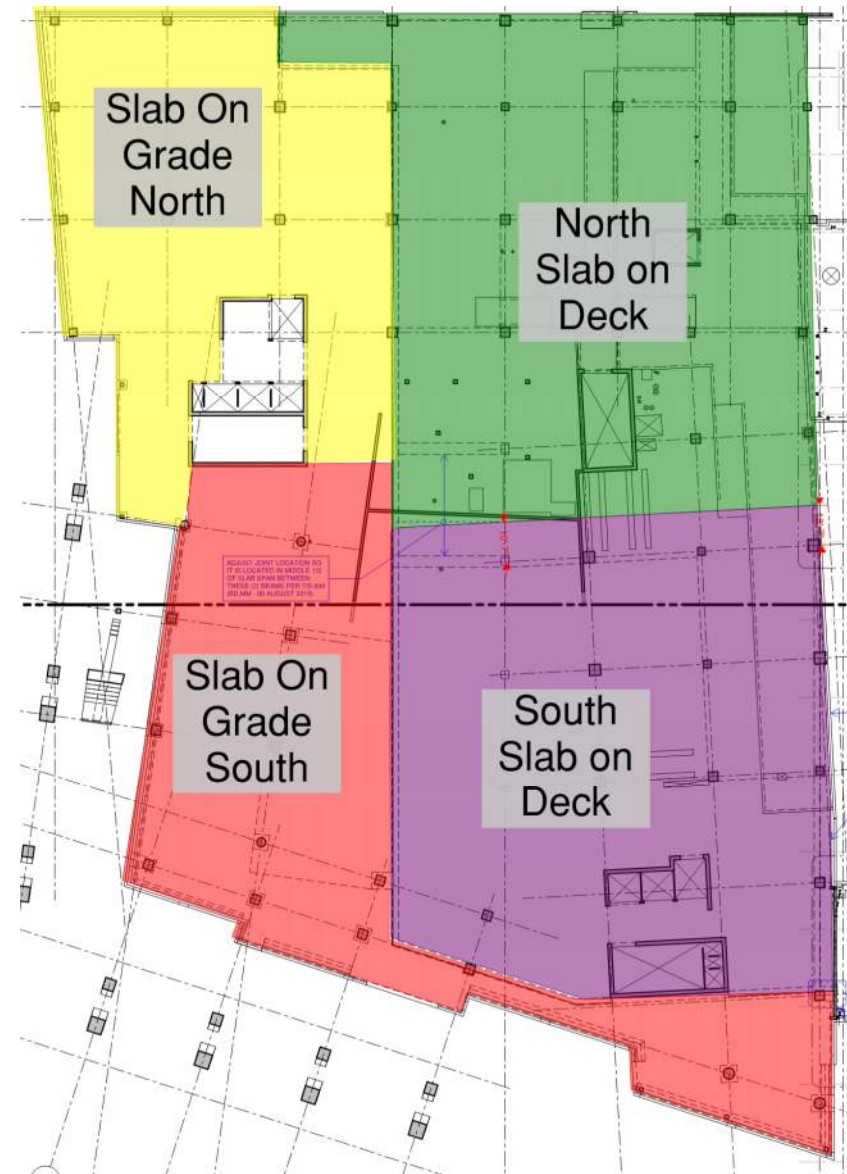


An aerial, grayscale photograph of a large university campus. The image shows a dense collection of academic buildings, dormitories, and administrative structures. There are several large, open green spaces, including what appears to be a sports field in the lower-left and various courtyards throughout the campus. Roads and parking lots are visible, weaving between the buildings. The overall layout is organized and sprawling. Overlaid in the center of the image is the text "Upcoming Activities" in a large, bold, black sans-serif font.

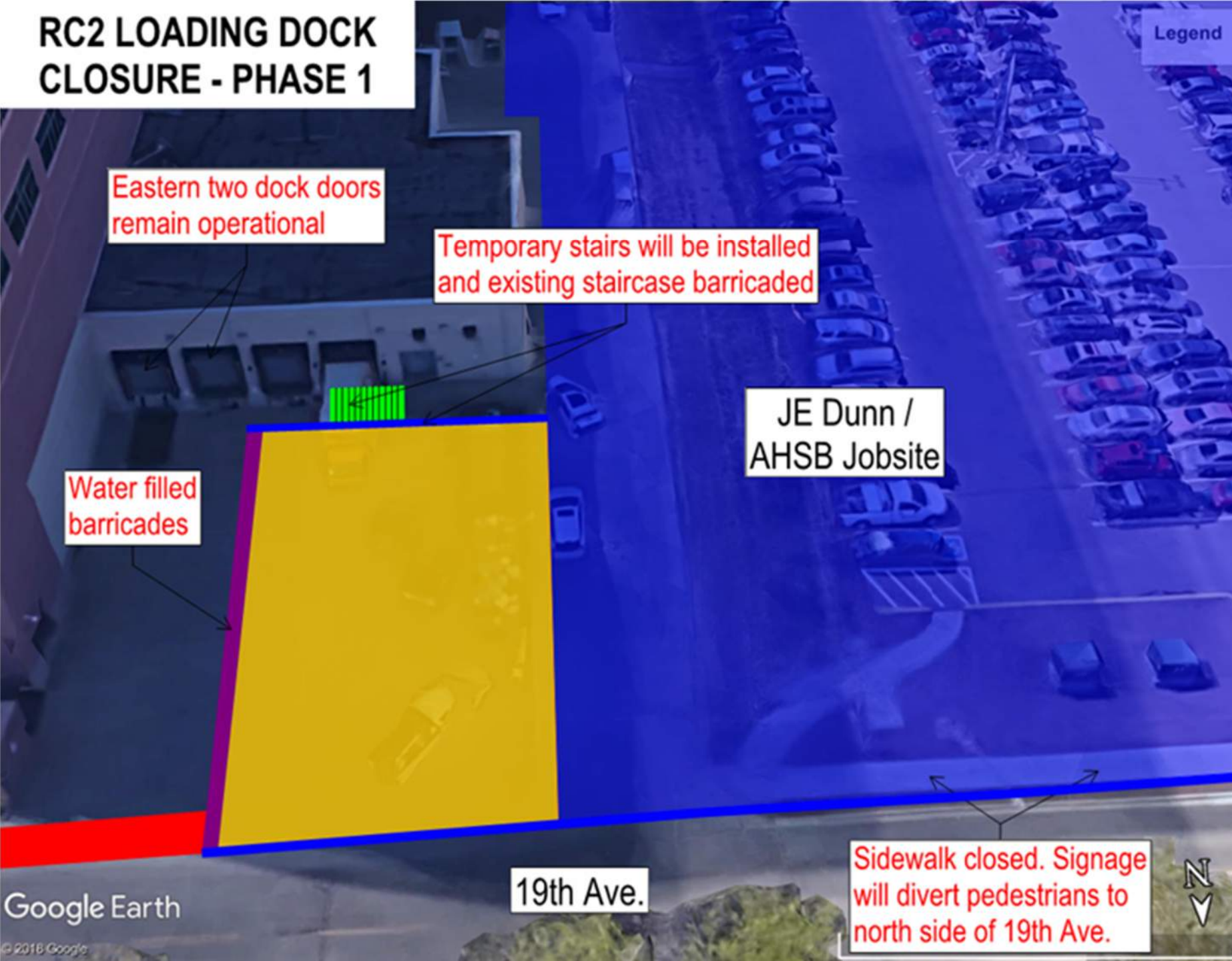
Upcoming Activities

Upcoming Activities

- Framing and Decking of Level 3
- Pour 3
- Level 3 Pour 2
- Continued reinforcing, along with Plumbing and Electrical coordination.
- RC2 Loading Dock Closure – Phase 1
- Grease Interceptor Install
- Fuel Oil Tank Install
- North Tunnel Install



RC2 LOADING DOCK CLOSURE - PHASE 1



Legend

Phase 1 duration: 5-6 months

- Preparations begin 12/2
- Excavation begins 12/9

Phase 1 work includes:

- Demolition
- Excavation
- Shoring installation
- Utility installation
- Tunnel construction
- New fuel oil tank

Dumpster access on the south side of R2

An aerial photograph of a large university campus, showing a dense arrangement of academic and administrative buildings, parking lots, and green spaces. The image is in a light, desaturated tone. Overlaid in the center is the text "LEED Scorecard" in a large, bold, black sans-serif font.

LEED Scorecard



LEED v4 for BD+C: New Construction and Major Renovation

Progress Checklist - Construction Documents

Project Name: **CU Anschutz Health Sciences Building**

Date: June 4th, 2019

Y ? N

1			Credit 1	Integrative Process	1
---	--	--	----------	---------------------	---

9	0	7	Location and Transportation	16
			Credit 1 LEED for Neighborhood Development Location	16
1			Credit 2 Sensitive Land Protection	1
		2	Credit 3 High Priority Site	2
2		3	Credit 4 Surrounding Density and Diverse Uses	5
4		1	Credit 5 Access to Quality Transit	5
1			Credit 6 Bicycle Facilities	1
1			Credit 7 Reduced Parking Footprint	1
		1	Credit 8 Green Vehicles	1

5	1	4	Sustainable Sites		10
Y			Prereq 1	Construction Activity Pollution Prevention	Required
1			Credit 1	Site Assessment	1
		2	Credit 2	Site Development - Protect or Restore Habitat	2
1			Credit 3	Open Space	1
	1	2	Credit 4	Rainwater Management (v4.1 ACP)	3
2			Credit 5	Heat Island Reduction	2
1			Credit 6	Light Pollution Reduction	1

7	0	4	Water Efficiency		11
Y			Prereq 1	Outdoor Water Use Reduction	Required
Y			Prereq 2	Indoor Water Use Reduction	Required
Y			Prereq 3	Building-Level Water Metering	Required
1		1	Credit 1	Outdoor Water Use Reduction	2
4		2	Credit 2	Indoor Water Use Reduction	6
1		1	Credit 3	Cooling Tower Water Use	2
1			Credit 4	Water Metering	1

23	0	10	Energy and Atmosphere	33
Y			Prereq 1 Fundamental Commissioning and Verification	Required
Y			Prereq 2 Minimum Energy Performance	Required
Y			Prereq 3 Building-Level Energy Metering	Required
Y			Prereq 4 Fundamental Refrigerant Management	Required
6			Credit 1 Enhanced Commissioning	6
13		5	Credit 2 Optimize Energy Performance	18
1			Credit 3 Advanced Energy Metering	1
		2	Credit 4 Demand Response	2
		3	Credit 5 Renewable Energy Production	3
1			Credit 6 Enhanced Refrigerant Management	1
2			Credit 7 Green Power and Carbon Offsets	2

5	3	5	Materials and Resources		13
Y			Prereq 1	Storage and Collection of Recyclables	Required
Y			Prereq 2	Construction and Demolition Waste Management Planning	Required
1	1	3	Credit 1	Building Life-Cycle Impact Reduction (v4.1 ACP)	5
1		1	Credit 2	BPDO - Environmental Product Declarations (v4.1 ACP)	2
1	1		Credit 3	BPDO - Sourcing of Raw Materials (v4.1 ACP)	2
1		1	Credit 4	BPDO - Material Ingredients (v4.1 ACP)	2
1	1		Credit 5	Construction and Demolition Waste Management (v4.1 ACP)	2

3	1	12	Indoor Environmental Quality		16
Y			Prereq 1	Minimum Indoor Air Quality Performance	Required
Y			Prereq 2	Environmental Tobacco Smoke Control	Required
1	1		Credit 1	Enhanced Indoor Air Quality Strategies	2
		3	Credit 2	Low-Emitting Materials (v4.1 ACP)	3
1			Credit 3	Construction Indoor Air Quality Management Plan	1
1		1	Credit 4	Indoor Air Quality Assessment	2
		1	Credit 5	Thermal Comfort	1
		2	Credit 6	Interior Lighting	2
		3	Credit 7	Daylight	3
		1	Credit 8	Quality Views	1
		1	Credit 9	Acoustic Performance	1

5	1	0	Innovation	6
1			Credit 1 Innovation: Mercury Reduction Lamp Purchasing Policy	1
1			Credit 2 Innovation : Green Building Education	1
1			Credit 3 Innovation: Occupant Comfort Survey	1
1			Credit 4 Exemplary Performance: BPDO EPD's or Heat Island?; or O+M Starter Kit?	1
	1		Credit 5 Pilot: TBD, pilot credit library options only	1
1			Credit 6 LEED Accredited Professional	1

2	0	2	Regional Priority - Zip Code 80045		4
		1	Credit 1	Regional Priority: Surrounding Density (3pts)	1
		1	Credit 2	Regional Priority: Rainwater Management (2pts)	1
1			Credit 3	Regional Priority: Optimize Energy Performance (10pts)	1
1			Credit 4	Regional Priority: Indoor Water Use Reduction (4pts)	1
ALT.: Outdoor Water Use Reduction (2pts); Renewable Energy (3pts)					

Y ? N

60	6	44	TOTALS	Possible Points: 110
----	---	----	--------	----------------------

Certified: 40 to 49 points, Silver: 50 to 59 points, Gold: 60 to 79 points, Platinum: 80 to 110

An aerial, grayscale photograph of a large university campus. The image shows a dense arrangement of academic buildings, dormitories, and administrative structures. A network of roads and walkways crisscrosses the campus, interspersed with green spaces, trees, and athletic fields. The overall layout is organized and sprawling. The word "Reminders" is superimposed in the center of the image in a large, black, sans-serif font.

Reminders

- Next Town Hall
 - January TBD; will distribute notice once scheduled
- Information can be found on the Facilities Active Projects website:
<http://www.ucdenver.edu/about/departments/FacilitiesManagement/FacilitiesProjects/ActiveProjects/Pages/AnschutzHealthSciencesBldg.aspx>
- Contact Information
 - Doug Wilson, doug.wilson@caaicon.com
 - Dan Loosbrock, dan.Loosbrock@caaicon.com

An aerial photograph of a large university campus. The image shows a dense cluster of academic and administrative buildings, interspersed with green spaces, trees, and parking lots. A major road or highway runs along the right side of the campus. The overall scene is captured in a high-angle, wide-area shot. The word "Questions?" is superimposed in a large, black, sans-serif font on the left side of the image.

Questions?