




University of Colorado
Anschutz Medical Campus

The Anschutz Health Sciences Building

Construction Update
5 September 2019

CAAICON

- 
- Construction Status
 - Accomplishments to Date
 - Upcoming Activities
 - Building Information Modeling (BIM) Coordination

Agenda

Project Leadership and Staff



Doug Wilson, Project Director
doug.wilson@caaicon.com

Daniel Loosbrock, Project Executive
daniel.loosbrock@caaicon.com



Eric Snelling, General Superintendent



University of Colorado
Anschutz Medical Campus

David Turnquist, Associate Vice Chancellor
Facilities Management

Michael Barden, Director
Facilities Projects

Ethan Carter, PhD, Director
Department of Environmental Health and Safety

Breanne Beck, Senior Industrial Hygienist
Department of Environmental Health and Safety

LoriAnn Smith, Associate Director
University Risk Management

An aerial photograph of a large university campus, showing a dense arrangement of academic buildings, dormitories, and green spaces. The image is in grayscale, with the text 'Construction Status' overlaid in the center. The campus features a grid-like street pattern, numerous parking lots, and several large, modern buildings. The text is in a large, bold, black font, centered horizontally and vertically across the middle of the image.

Construction Status

- Concrete Pours
 - Level 1
 - Level 2
 - Grade beams
 - Tunnel wall
 - Sculptural Columns





An aerial, grayscale photograph of a large university campus. The image shows a dense collection of academic buildings, dormitories, and administrative structures. A prominent road runs vertically through the center, flanked by various buildings. To the right, there are large parking lots and some green spaces. The overall layout is organized and sprawling. Overlaid on the center of the image is the text "Upcoming Activities" in a large, bold, black sans-serif font.

Upcoming Activities

UPCOMING ACTIVITIES

Pour Concrete Level 1 North

Backfill Foundation Walls

Continue Forming Sculptural
Columns

Form/ Reinforce Level 2 Deck Pour 1

MEP Underground

Slab-on-Grade Activities

19th

R2 DOCK

R2

Tower Crane

South Tunnel

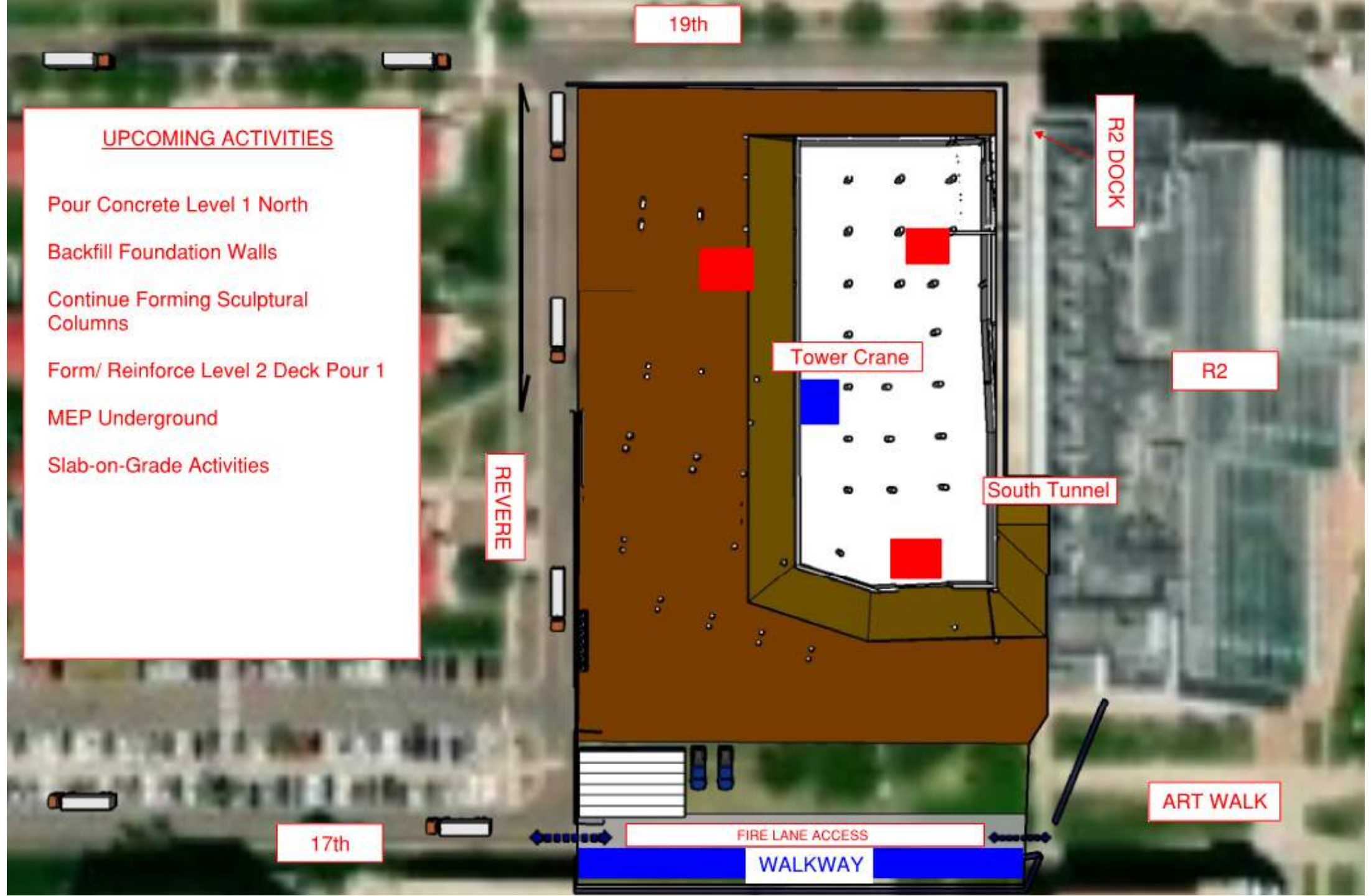
REVERSE

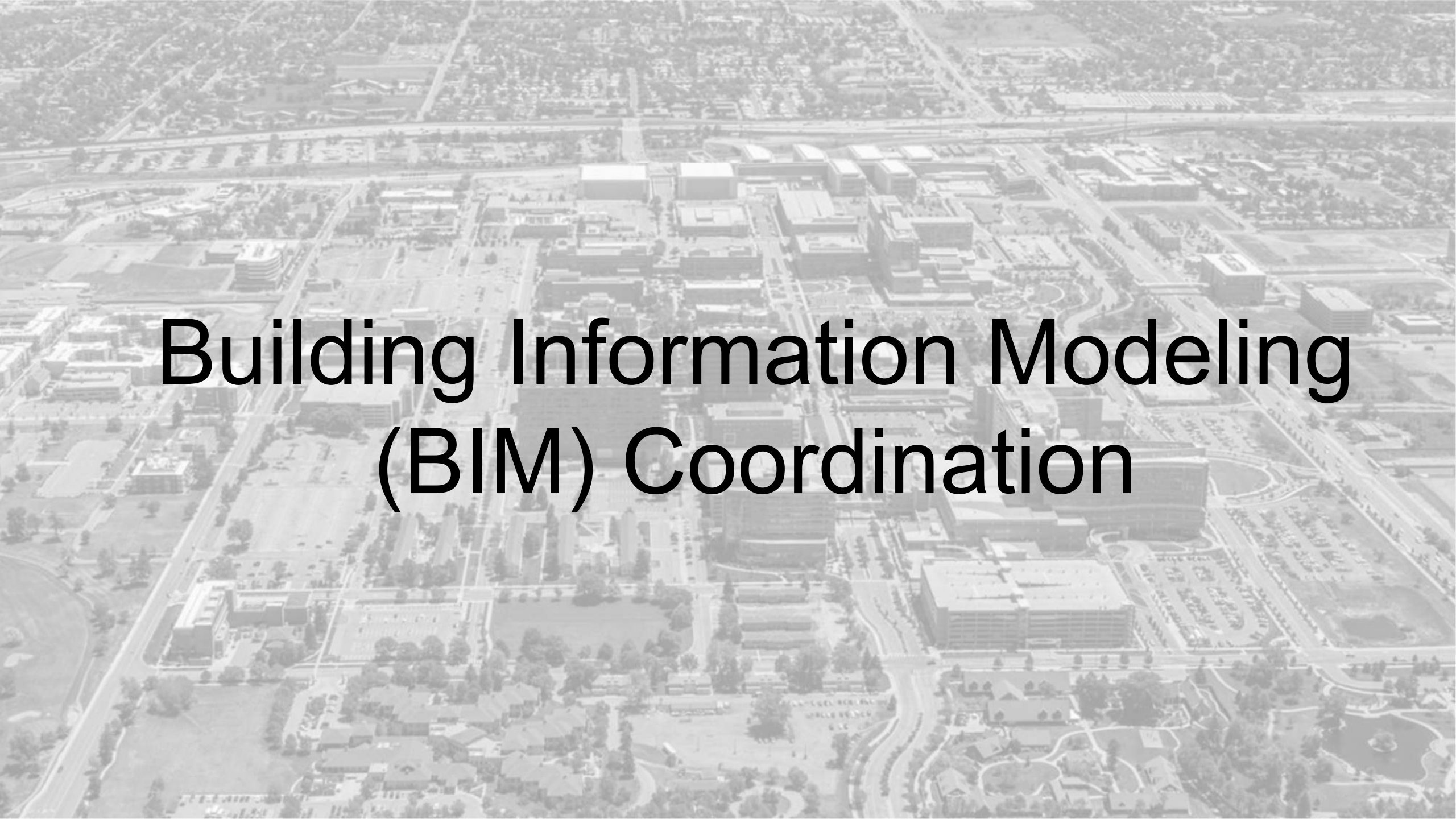
ART WALK

17th

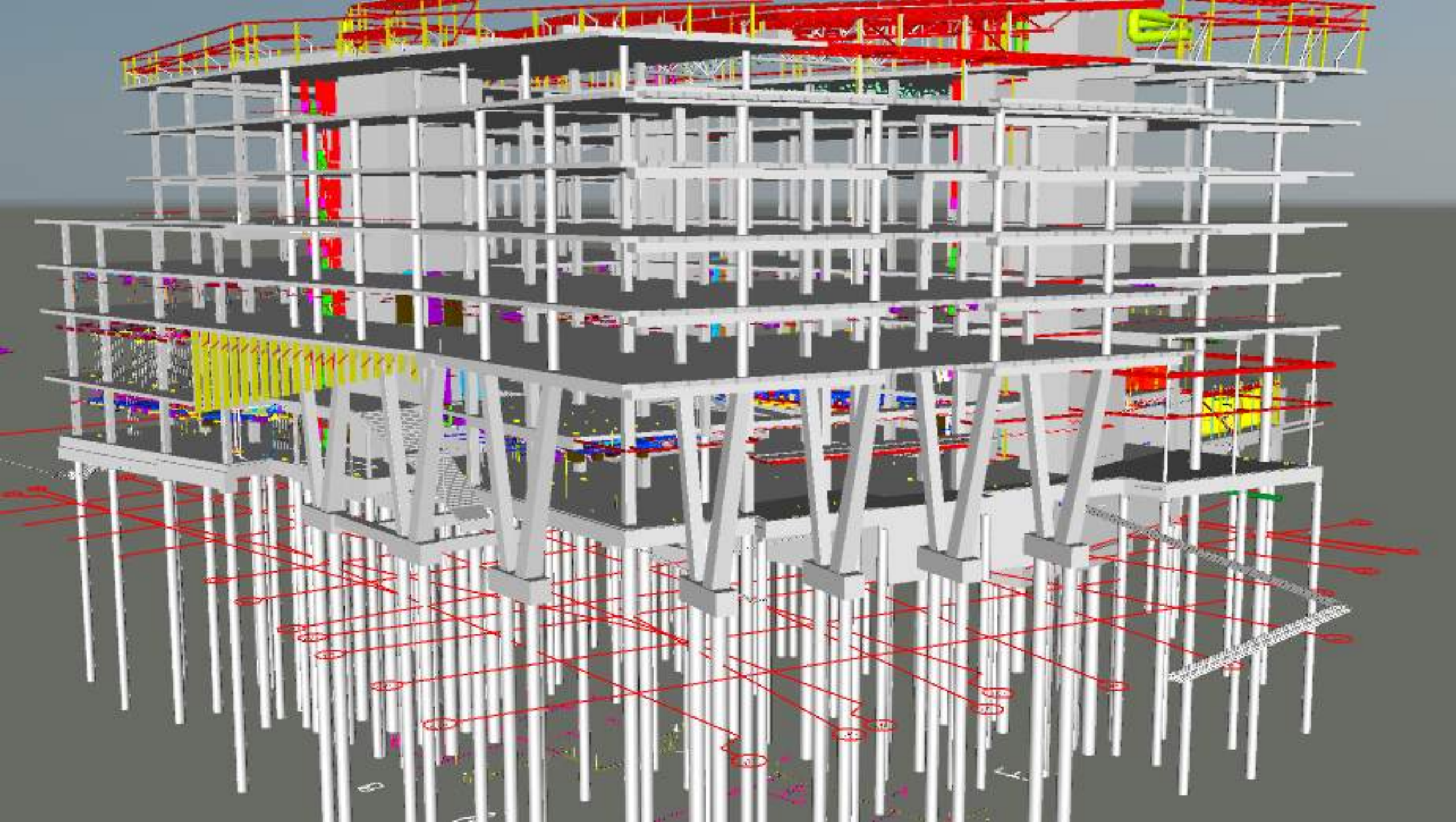
FIRE LANE ACCESS

WALKWAY

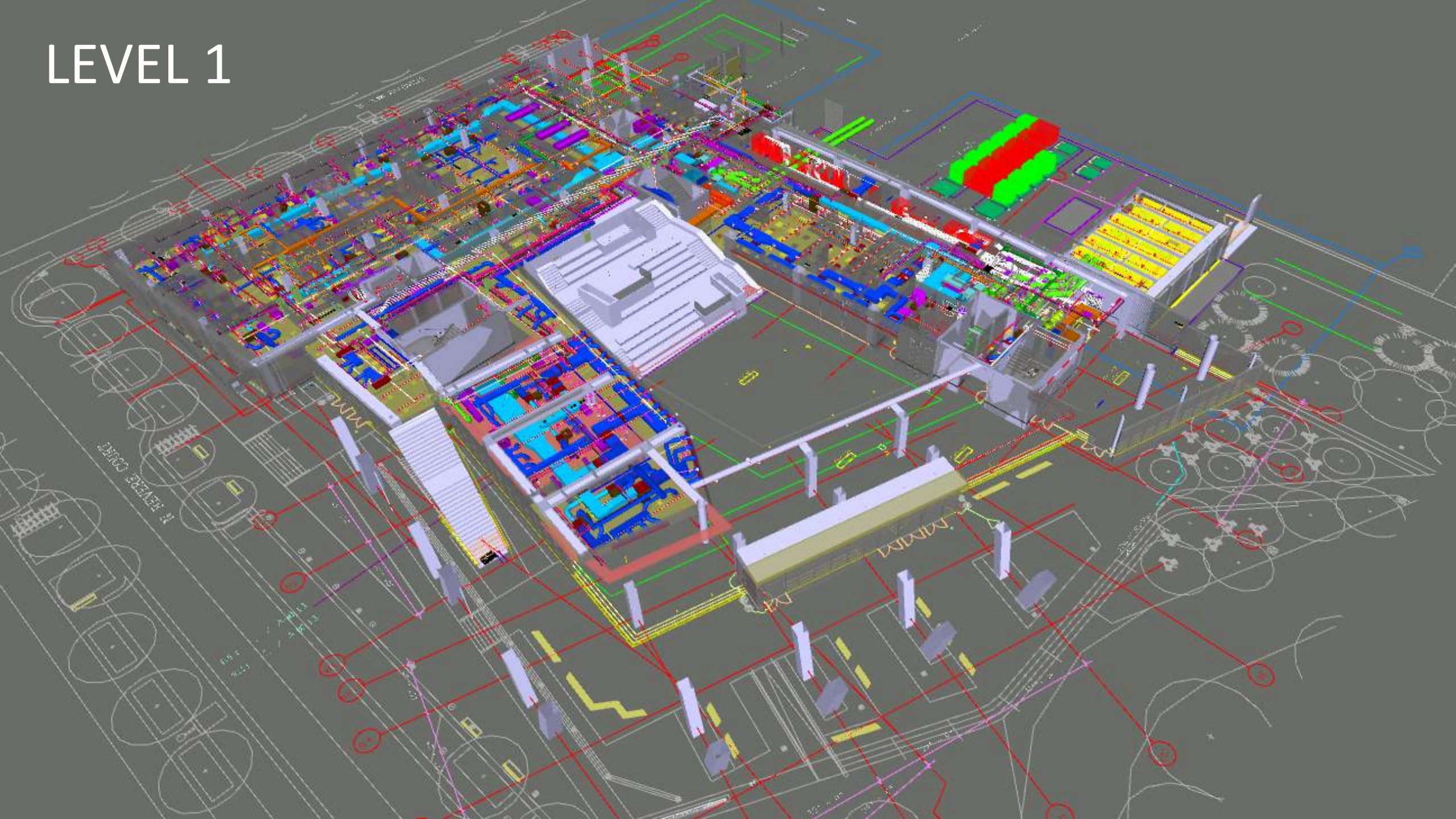


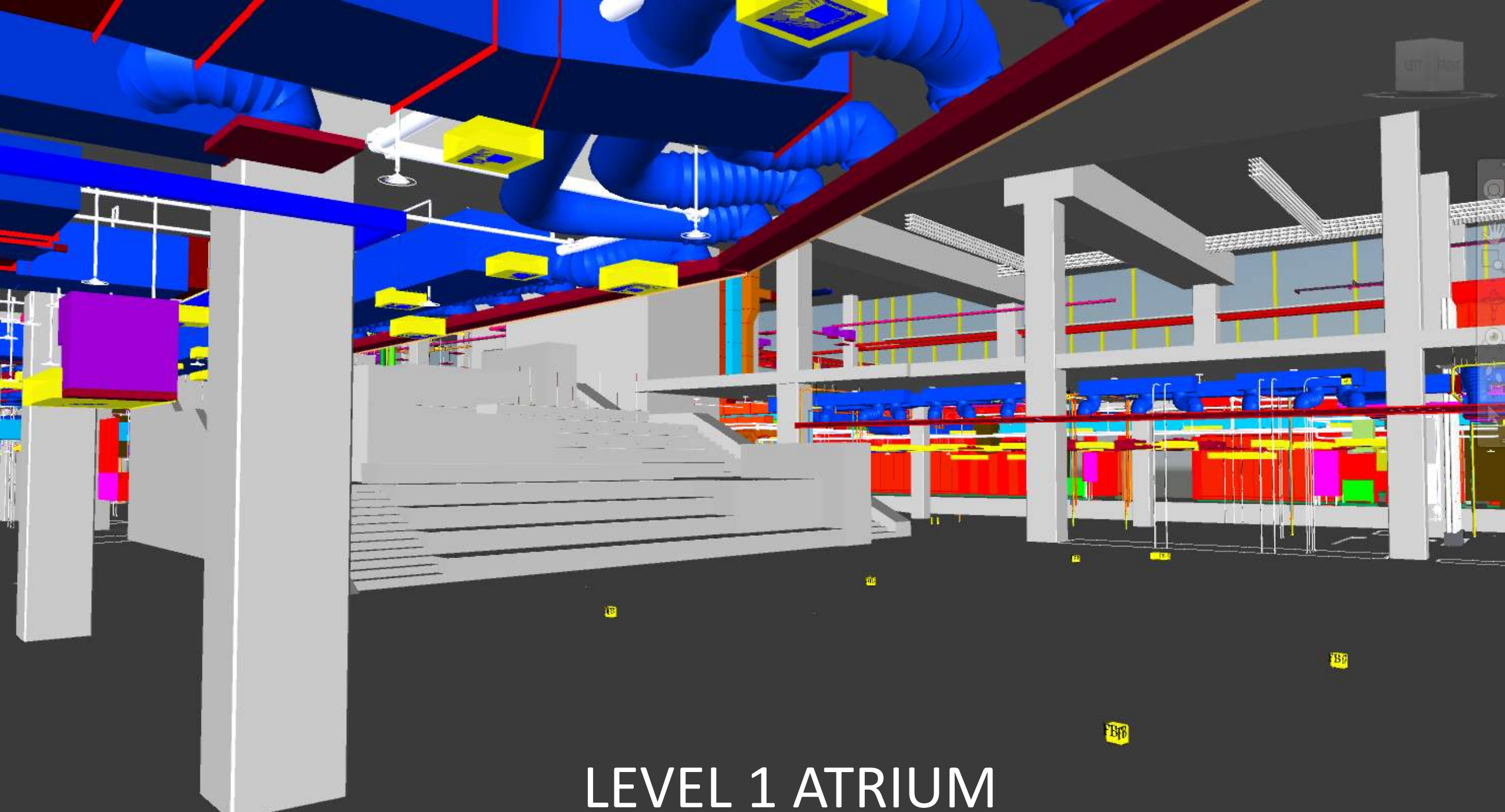
An aerial photograph of a large university campus, featuring numerous academic buildings, green spaces, and parking lots. The image is in grayscale and serves as a background for the title text.

Building Information Modeling (BIM) Coordination



LEVEL 1





LEVEL 1 ATRIUM

An aerial, grayscale photograph of a large university campus. The image shows a dense collection of academic and administrative buildings, interspersed with green spaces, trees, and parking lots. A major road or highway runs along the left side of the campus. The overall layout is organized and sprawling. The word "Reminders" is superimposed in the center of the image in a large, black, sans-serif font.

Reminders

- Next Town Hall
 - October 11th at 12:00pm
- Information can be found on the Facilities Active Projects website:
<http://www.ucdenver.edu/about/departments/FacilitiesManagement/FacilitiesProjects/ActiveProjects/Pages/AnschutzHealthSciencesBldg.aspx>
- Contact Information
 - Doug Wilson, doug.wilson@caaicon.com

An aerial photograph of a large university campus. The image shows a dense cluster of academic buildings, including several large, multi-story structures with flat roofs. There are numerous parking lots filled with cars, interspersed with green spaces and trees. A road with a median runs through the center of the campus. In the foreground, there's a smaller building complex with a circular driveway. The overall scene is a typical university landscape. The word "Questions?" is superimposed in a large, black, sans-serif font on the left side of the image.

Questions?