

UPSTREAM & DOWNSTREAM: FOCUS ON ILLNESS



CURRENT HEALTH SYSTEM

ACUTE & SPECIALTY CARE DOMINANCE

- Hospital/Physical Care
- Specialists
- Finance Focused Here
- Centralized IT Focused on Billing

SUPPORTING ORGANIZATIONS

- Radiology
- Laboratories
- Pharmaceuticals
- Skilled Nursing
- Rehab

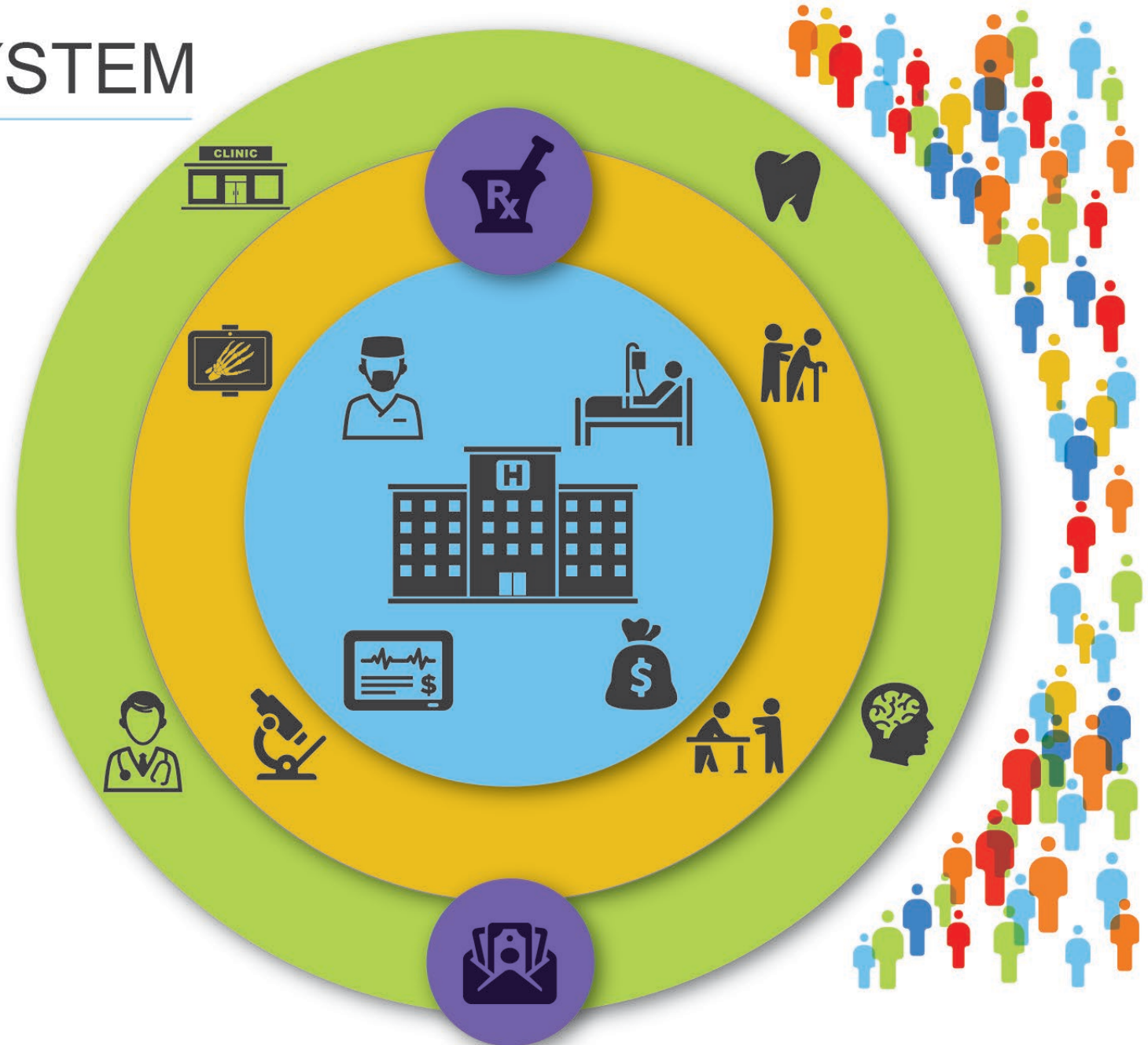
PRIMARY CARE

- Clinics
- General Practitioners
- Behavioral Health—Often Unconnected
- Dental—Usually Unconnected

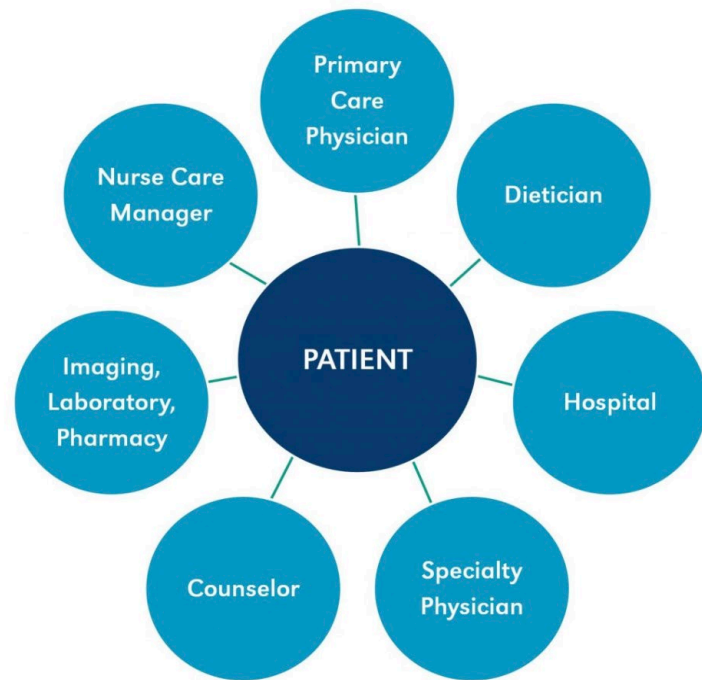
OVERLAPPING

- Pharmaceuticals
- Payers/Insurers

PEOPLE — OUTSIDE LOOKING IN

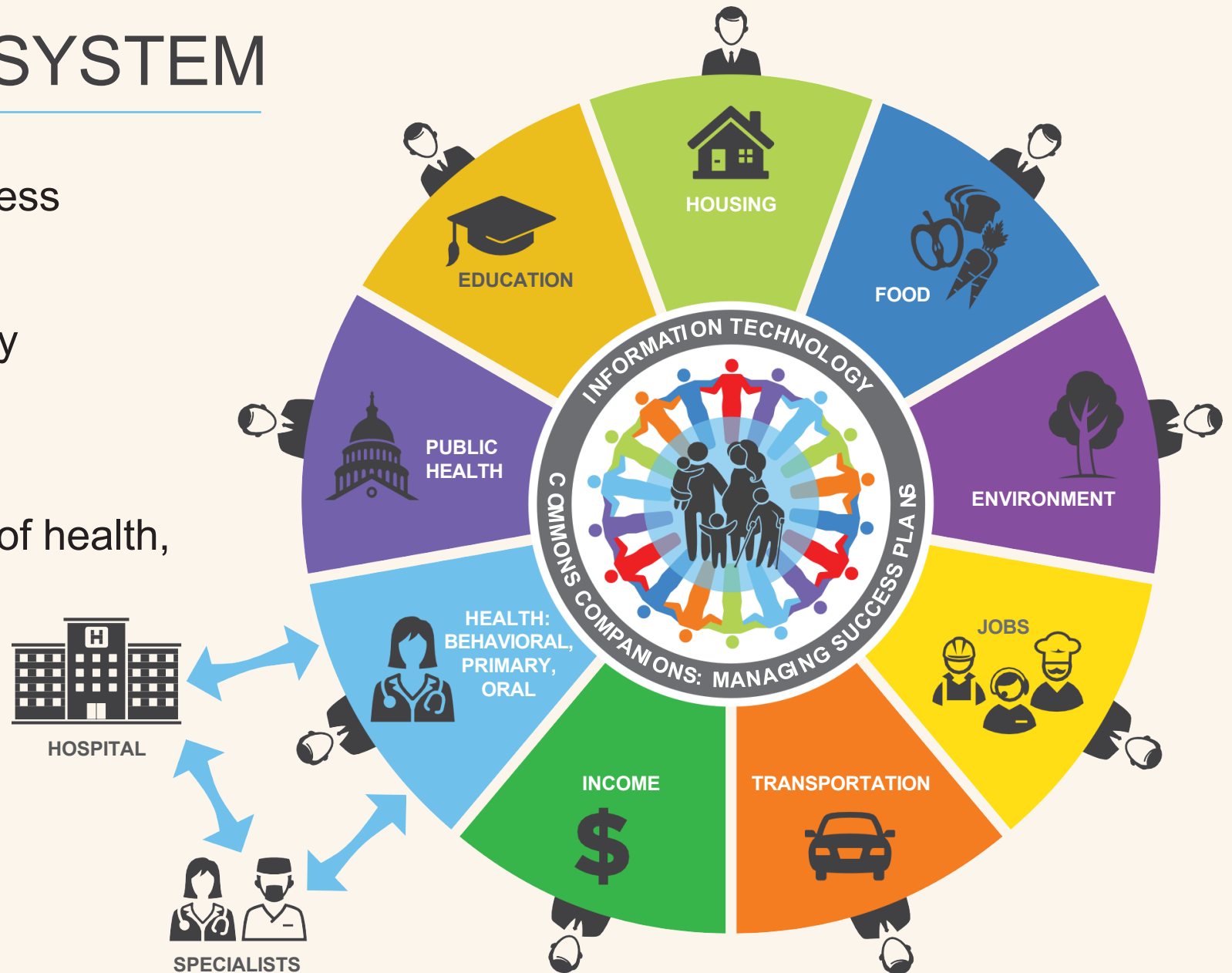


From Clinic To Community



FUTURE HEALTH SYSTEM

- Emphasis on vitality, not illness
- Person and family centered
- Focus on friends, community supporting families
- Community as full partner
- Collaborative management of health, social supports
- Medicine tightly integrated
- Minimize acute care



INVESTING IN VITALITY

- Personal success plan
- Holistic, integrated
- Ongoing support
- Right pocket
- ROI delivered
- Finance with benefits/savings

