

ANNUAL REVIEW | FY 2021

ECHO COLORADO leverages the knowledge and experience of geographically-diverse communities for workforce development and improved health for all. Our virtual ECHO series increase the capacity of health professionals by enabling specialists and front line clinicians to meet in a collaborative focused on a particular clinical or public health-related topic. The result is the spreading of knowledge that positively impacts health equity across the state and beyond.

Located on the University of Colorado Anschutz Medical Campus, ECHO Colorado is a part of the Peer Mentored Care Collaborative (PMCC). The PMCC is focused on strengthening relationships between community-based primary care providers and academic medical center-based specialists to assure communication of best practices, increased care coordination and improved collaboration.

A SAMPLE OF FY 2021 ECHO SERIES

- Implementing a Successful Telehealth Program
- Endocrinology and Diabetes for Adult Primary Care
- Hospital-based Medication for Addiction Treatment
- Rheumatology in Primary Care
- Pediatric Psychiatry: Core Essentials
- Autism and Developmental Disability Case Review
- Transgender Health: Comprehensive Approaches in Primary Care
- Adolescent Reproductive Health
- Common Urologic Conditions in Primary Care

PARTICIPANTS

3,917

SESSIONS OFFERED

618

PARTICIPANTS/SESSION

Avg ~25

SESSIONS ATTENDED

15,601

Fiscal Year 2021 began July 1, 2020 and ended June 30, 2021

OFFERED IN FY 2020

31

SERIES

60

COHORTS

320

SESSIONS

OFFERED IN FY 2021

35

SERIES

174

COHORTS

594

SESSIONS

PROGRAM GOALS

- Increase the capacity of health professionals in Colorado and beyond
- Promote professional collaboration
- Empower participants to serve as a local resource
- Increase access to specialty care

POPULATIONS SERVED

39% of participants served medically underserved populations

81% served rural or frontier communities

55% served the Medicaid population

Data not captured for all series

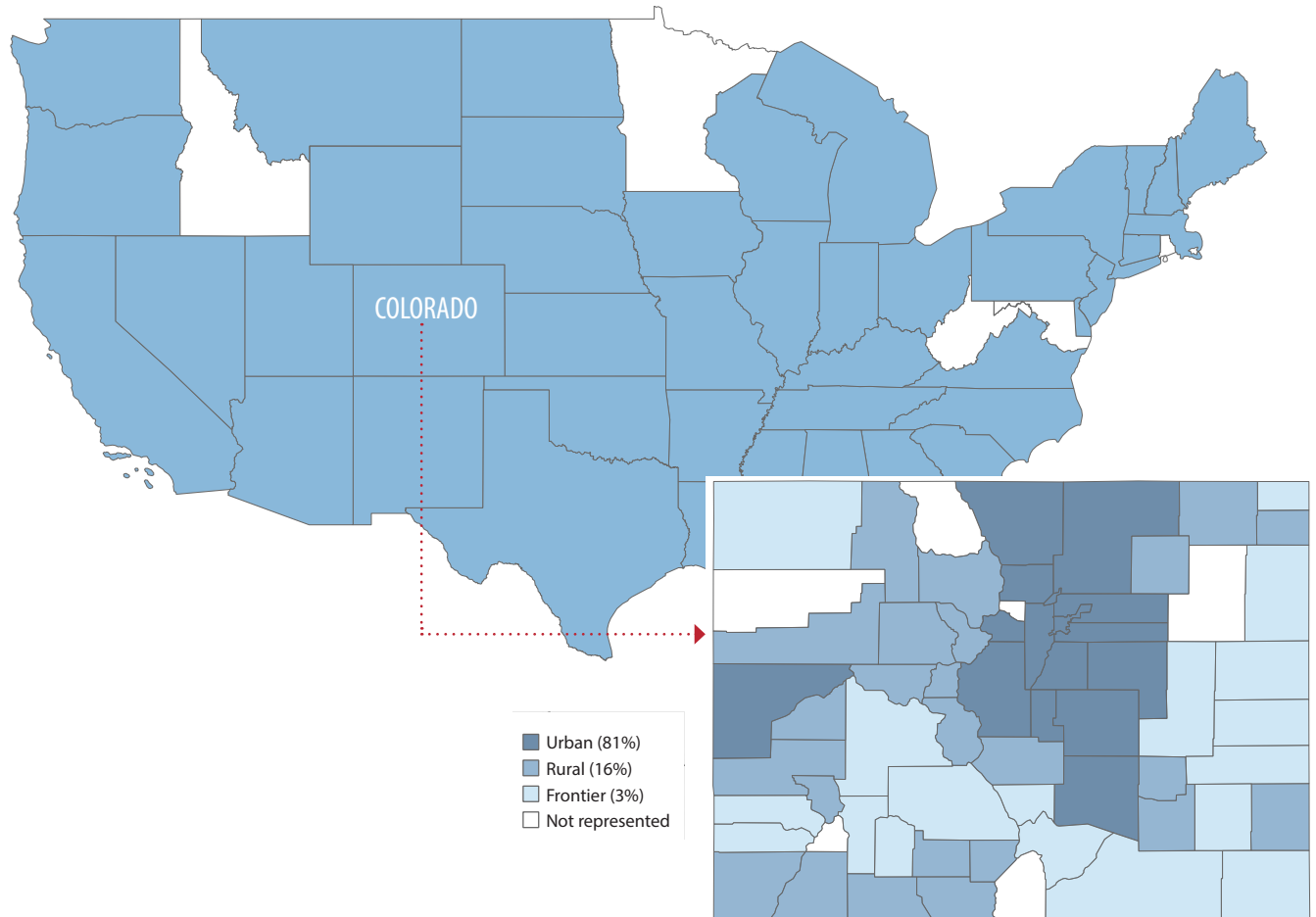


"The ability to collaborate remotely with health care professionals from a variety of backgrounds is really important to disseminating the right information and ensuring that Coloradans are getting the best care."

~ **Governor Jared Polis** addressing the value of ECHO Colorado's response to the pandemic

FY 2021 REACH

Registrants (5,439) represented 56 states and 58 (91%) of Colorado's 64 counties.



OUR SUPPORTERS

ECHO Colorado projects are made possible through financial support from:

- Chancellor, University of Colorado Anschutz Medical Campus
- University of Colorado School of Medicine
- Children's Hospital Colorado
- ZOMA Foundation
- Colorado Department of Health Care Policy & Financing
- Colorado Office of Behavioral Health
- Colorado Department of Public Health & Environment
- Substance Abuse and Mental Health Services Administration
- Agency for Health Research and Quality
- Centers for Disease Control & Prevention

COLORADO PARTICIPATION

FY 2021 participation increased **278%** over over FY 2020.

2020

962

2021

3,464



The specialists are down to earth and 'get' the difficulty we have in primary care. They are honest and are able to really assist me with diagnosis, management and referrals."

~ MD in Colorado Springs

PARTICIPANT QUOTES

"I feel much more comfortable with making an early diagnosis and providing options for treatment to my patients. This is so important with limited rheumatology resources in Western Colorado." ~ MD/DO, Montrose

"The speaker was great and engaging with her presentation. The resources were really informative."

~ Leadership, Grand Forks

"I love that you have several of the providers from the different fields (MD, PhD, PharmD, MSW) providing guidance."

~ Physician's Assistant, Arvada

"The information presented was super useful. And strange to say after years of practice new. I would recommend this series to anyone working with females of reproductive age. Dr. Eliza Buyers is amazing, very knowledgeable and amazing teacher, which is very rare to find."

~ MD/DO, Centennial

"The speakers in the series were top notch, with great information and helpful resources. Mental health is such a critical pediatric issue and this series gave me so much good information, as well as an introduction to colleagues who I can connect with after the series. SO helpful!"

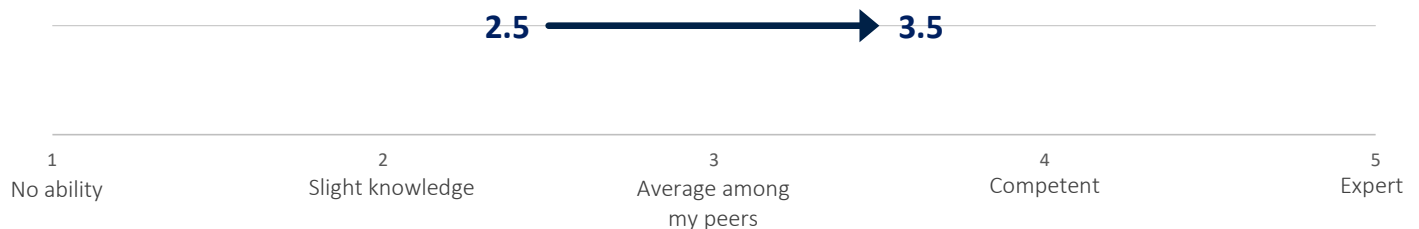
~ Nurse Practitioner, Colorado Springs

"You took the fear out of this. Before I always felt this should be left up to providers who 'know what they are doing.' I feel now like I would know where to go to get help if I had a question or concern. I am so excited for the ongoing series because I feel like the amount I can/want to learn is infinite. This is a very relaxed and welcoming environment in which to learn and the expertise of the presenters is top notch."

~ Nurse Practitioner, Laramie

EDUCATIONAL IMPACT

For select series, respondents were asked to rate their ability to complete the learning objectives and act as a local resource on the topic of the ECHO series using a Likert scale of 1 to 5, where 1 is "no ability" and 5 is "expert." The overall change in pre and post ratings is reflected in the chart below. **Increases in reported self-efficacy were statistically significant ($p < .001$).**



PROFESSION OF PARTICIPANTS

Clinical staff	3,017
Behavioral health provider	70
Health outreach/coordination/education	59
Public and environmental health	51
Administrative staff	37
Practice management	33
Doctor of pharmacy	25
Student	10
Oral health provider	8
Child welfare	3
Other	47

.....▶ Doctor of medicine or osteopathy	44%
Advanced practice providers	36%
Nursing	18%
Other	1%

Questions?

Contact Leah Willis

Director of Programs

leah.willis@cuanschutz.edu

RESPONSE TO COVID-19

ECHO Colorado mobilized quickly to implement **nine** unique offerings in response to the COVID-19 pandemic.

Past the Pandemic: Mental Well-being for You and Your Patients

COVID-19 Just-in-Time ECHO for Primary Care

COVID-19 Just-in-Time ECHO for Schools

Experiences from Frontline Physicians in Colorado Intensive Care Units

Primary Care Voice: Advocacy and Innovation Leveraged

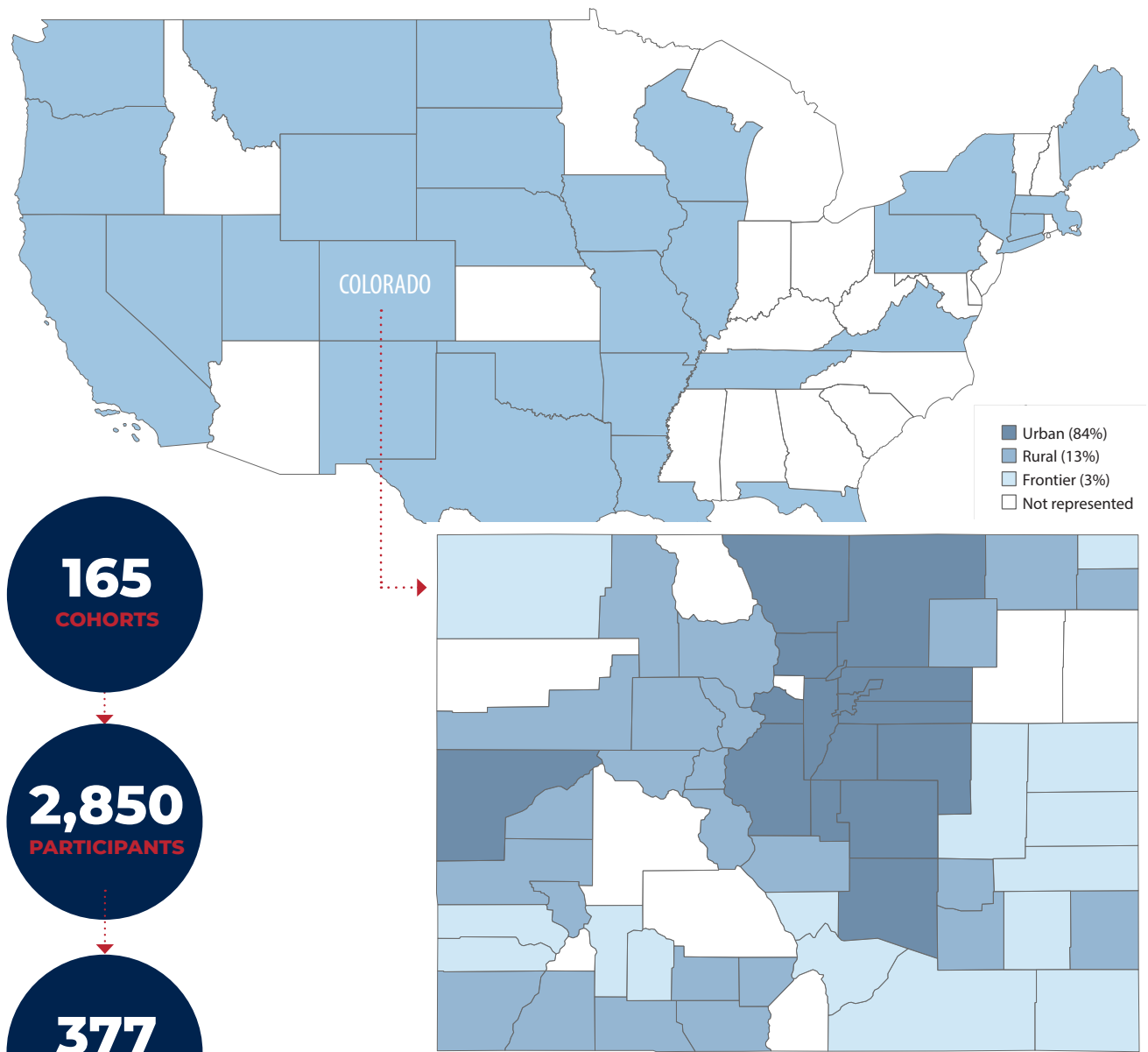
School Nurses Town Hall

UCHealth Virtual Visits Telehealth Training

Nursing Home COVID Action Network

COVID Care in the Ambulatory Setting

COVID PROGRAM REACH



This data includes COVID response programs beginning March 2020 through June 2021.