



Department of Psychiatry  
SCHOOL OF MEDICINE  
UNIVERSITY OF COLORADO **ANSCHUTZ MEDICAL CAMPUS**

## Connections Program for High-Risk Infants and Families

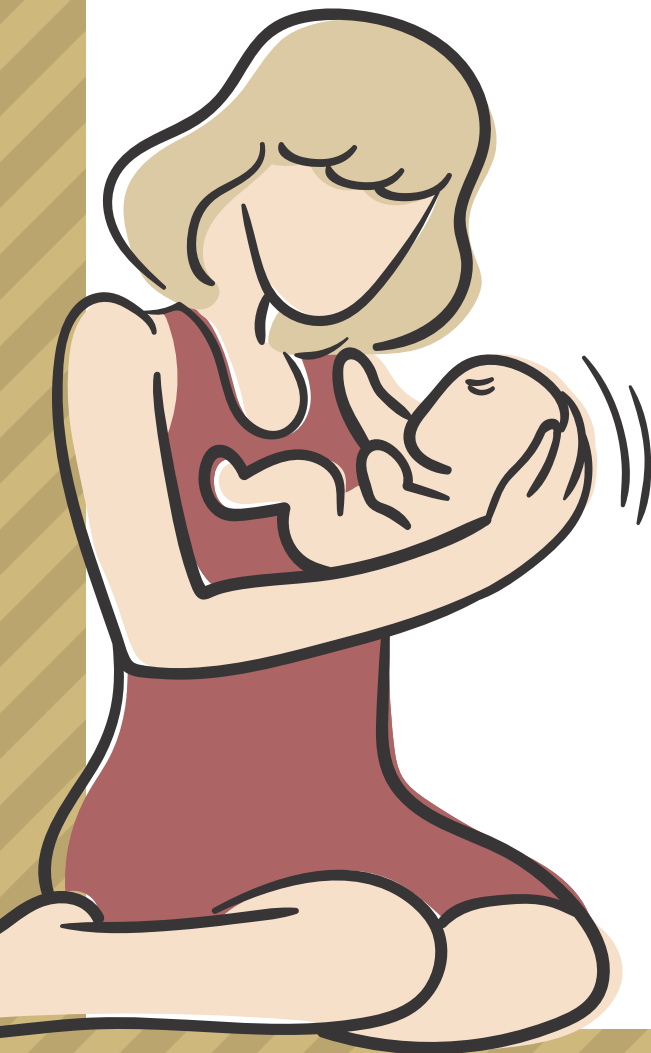
Women's Behavioral Health and Wellness Outpatient Program

Department of Psychiatry CU-SOM

# Connections Mother-Infant Group

A place where women can connect, learn, and find support as they navigate the unique experience of parenting medically complex babies.

**One-hour virtual group held on Thursdays at 1:00pm**



This virtual therapy group is designed specifically for mothers of infants after ICU discharge to offer support around parenting a high-risk infant and promoting positive mother-infant interactions within the context of providing care for babies with special healthcare needs.

Contact the **Connections Program** through the Women's Behavioral Health and Wellness Line to schedule an intake appointment for group participation: **303-724-1646** or email **WBHW@cuanschutz.edu**