

# RESEARCH 1 - ABSL SUITE RENOVATION

**AndersonMasonDale  
Architects**

100% CONSTRUCTION DOCUMENTS

21-717  
Anschutz Research 1 - ABSL-3 Suite Renovation  
12950 E. Montview Blvd.  
Aurora, CO 80045  
April 29, 2022

NOTE: NOT ALL ABBREVIATIONS AND SYMBOLS ARE USED ON DRAWINGS CONTAINED IN THE SET. SYMBOLS AND ABBREVIATIONS ON THIS SHEET APPLY ONLY TO ARCHITECTURAL DRAWINGS

## CAMPUS MAP

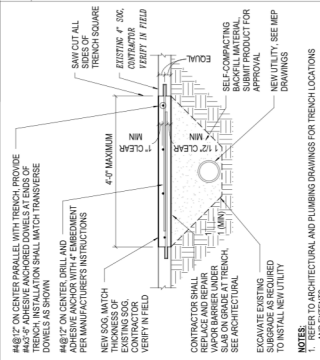


## GRAPHIC SYMBOLS

VICINITY MAP

## 0-000 COVER SHEET

CODE STUDY



1 TYPICAL TRENCH IN EXISTING SOG

STRUCTURAL CONCRETE SPECIAL INSPECTIONS			
ITEM	FREQUENCY	STANDARD	CRITERIA
REINFORCING STEEL	DURING PLACEMENT	P	VERIFY GRADE, FINISH, SIZE, BAR QUALITY, TOLERANCES, SPACING, COATING, SURFACE CONDITION, AND SUPPORT
		P	VERIFY TYPICAL PLACEMENT OF CONCRETE
BOLTS AND EMBEDMENTS	DURING PLACEMENT OF CONCRETE	P	VERIFY TYPE, FINISH, DIAMETER, LENGTH, TOLERANCES, SPACING, COATING, SURFACE CONDITION, AND SUPPORT
		P	VERIFY TYPICAL PLACEMENT OF CONCRETE
CONCRETE	DURING PLACEMENT OF CONCRETE	P	VERIFY TYPE, FINISH, DIAMETER, LENGTH, TOLERANCES, SPACING, COATING, SURFACE CONDITION, AND SUPPORT
		P	VERIFY TYPICAL PLACEMENT OF CONCRETE

CONCRETE MIX TABLE			
CONC MIX TYPE	INTENDED USE	28 DAY STRENGTH (PSI)	MAX AGGREGATE SIZE (IN)
1	STRUCTURAL CONCRETE	35	1
2	CONCRETE	35	1

STRUCTURAL CONCRETE TESTING			
ITEM	FREQUENCY	STANDARD	CRITERIA
CONCRETE	COMPOSITE SAMPLE	ASTM C172	OBTAIN AT POINT OF PLACEMENT
		ASTM C143	SPECIFIED SLUMP SHALL BE AS SUBMITTED IN THE CONTRACT DOCUMENTS
TEMPERATURE	EACH COMPOSITE SAMPLE	ASTM C1064	REQUIRED WHEN PLACEMENT IS AT 10° F BELOW OR 90° F ABOVE
		ASTM C1064	REQUIRED WHEN PLACEMENT IS AT 10° F BELOW OR 90° F ABOVE
COMPRESSION STRENGTH	EACH COMPOSITE SAMPLE	ASTM C1064	REQUIRED WHEN PLACEMENT IS AT 10° F BELOW OR 90° F ABOVE
		ASTM C1064	REQUIRED WHEN PLACEMENT IS AT 10° F BELOW OR 90° F ABOVE

POST-INSTALLED ANCHOR TABLE			
ANCHOR TYPE	PRODUCT	F <sub>y</sub> (KSI)	F <sub>u</sub> (KSI)
ADHESIVE IN CONCRETE	HEALTHY 208-V3	-	-

POST-INSTALLED ANCHORS/REINFORCING STEEL SPECIAL INSPECTIONS			
ITEM	FREQUENCY	STANDARD	CRITERIA
ADHESIVE ANCHORS, REINFORCING STEEL ANCHORED INTO HARDENED CONCRETE	TENSION TEST	ASTM E188	TEST THE INSTALLATION OF THE FIRST 1/3 OF EACH TYPE, BASE MATERIAL, AND POSITION DOWN HORIZONTAL OVERHEAD. OBSERVE ASTM E188 MINIMUM EDGE DISTANCE FOR DETERMINING TEST RESULTS. VERIFY TYPICAL PLACEMENT OF CONCRETE
		ASTM E188	TEST THE INSTALLATION OF THE FIRST 1/3 OF EACH TYPE, BASE MATERIAL, AND POSITION DOWN HORIZONTAL OVERHEAD. OBSERVE ASTM E188 MINIMUM EDGE DISTANCE FOR DETERMINING TEST RESULTS. VERIFY TYPICAL PLACEMENT OF CONCRETE
ADHESIVE ANCHORS, REINFORCING STEEL ANCHORED INTO HARDENED CONCRETE	TENSION TEST	ASTM E188	TEST THE INSTALLATION OF THE FIRST 1/3 OF EACH TYPE, BASE MATERIAL, AND POSITION DOWN HORIZONTAL OVERHEAD. OBSERVE ASTM E188 MINIMUM EDGE DISTANCE FOR DETERMINING TEST RESULTS. VERIFY TYPICAL PLACEMENT OF CONCRETE
		ASTM E188	TEST THE INSTALLATION OF THE FIRST 1/3 OF EACH TYPE, BASE MATERIAL, AND POSITION DOWN HORIZONTAL OVERHEAD. OBSERVE ASTM E188 MINIMUM EDGE DISTANCE FOR DETERMINING TEST RESULTS. VERIFY TYPICAL PLACEMENT OF CONCRETE

POST-INSTALLED ANCHORS/REINFORCING STEEL SPECIAL INSPECTIONS			
ITEM	FREQUENCY	STANDARD	CRITERIA
ADHESIVE ANCHORS, REINFORCING STEEL ANCHORED INTO HARDENED CONCRETE	TENSION TEST	ASTM E188	TEST THE INSTALLATION OF THE FIRST 1/3 OF EACH TYPE, BASE MATERIAL, AND POSITION DOWN HORIZONTAL OVERHEAD. OBSERVE ASTM E188 MINIMUM EDGE DISTANCE FOR DETERMINING TEST RESULTS. VERIFY TYPICAL PLACEMENT OF CONCRETE
		ASTM E188	TEST THE INSTALLATION OF THE FIRST 1/3 OF EACH TYPE, BASE MATERIAL, AND POSITION DOWN HORIZONTAL OVERHEAD. OBSERVE ASTM E188 MINIMUM EDGE DISTANCE FOR DETERMINING TEST RESULTS. VERIFY TYPICAL PLACEMENT OF CONCRETE
ADHESIVE ANCHORS, REINFORCING STEEL ANCHORED INTO HARDENED CONCRETE	TENSION TEST	ASTM E188	TEST THE INSTALLATION OF THE FIRST 1/3 OF EACH TYPE, BASE MATERIAL, AND POSITION DOWN HORIZONTAL OVERHEAD. OBSERVE ASTM E188 MINIMUM EDGE DISTANCE FOR DETERMINING TEST RESULTS. VERIFY TYPICAL PLACEMENT OF CONCRETE
		ASTM E188	TEST THE INSTALLATION OF THE FIRST 1/3 OF EACH TYPE, BASE MATERIAL, AND POSITION DOWN HORIZONTAL OVERHEAD. OBSERVE ASTM E188 MINIMUM EDGE DISTANCE FOR DETERMINING TEST RESULTS. VERIFY TYPICAL PLACEMENT OF CONCRETE

CONCRETE NOTES			
1. GENERAL	1. GENERAL	1. GENERAL	1. GENERAL
2. REINFORCING MATERIALS	2. REINFORCING MATERIALS	2. REINFORCING MATERIALS	2. REINFORCING MATERIALS
3. REINFORCING FABRICATION	3. REINFORCING FABRICATION	3. REINFORCING FABRICATION	3. REINFORCING FABRICATION
4. SUBMITTALS	4. SUBMITTALS	4. SUBMITTALS	4. SUBMITTALS

CONCRETE MIX TABLE			
CONC MIX TYPE	INTENDED USE	28 DAY STRENGTH (PSI)	MAX AGGREGATE SIZE (IN)
1	STRUCTURAL CONCRETE	35	1
2	CONCRETE	35	1

STRUCTURAL CONCRETE TESTING			
ITEM	FREQUENCY	STANDARD	CRITERIA
CONCRETE	COMPOSITE SAMPLE	ASTM C172	OBTAIN AT POINT OF PLACEMENT
		ASTM C143	SPECIFIED SLUMP SHALL BE AS SUBMITTED IN THE CONTRACT DOCUMENTS
TEMPERATURE	EACH COMPOSITE SAMPLE	ASTM C1064	REQUIRED WHEN PLACEMENT IS AT 10° F BELOW OR 90° F ABOVE
		ASTM C1064	REQUIRED WHEN PLACEMENT IS AT 10° F BELOW OR 90° F ABOVE
COMPRESSION STRENGTH	EACH COMPOSITE SAMPLE	ASTM C1064	REQUIRED WHEN PLACEMENT IS AT 10° F BELOW OR 90° F ABOVE
		ASTM C1064	REQUIRED WHEN PLACEMENT IS AT 10° F BELOW OR 90° F ABOVE

POST-INSTALLED ANCHOR TABLE			
ANCHOR TYPE	PRODUCT	F <sub>y</sub> (KSI)	F <sub>u</sub> (KSI)
ADHESIVE IN CONCRETE	HEALTHY 208-V3	-	-

POST-INSTALLED ANCHORS/REINFORCING STEEL SPECIAL INSPECTIONS			
ITEM	FREQUENCY	STANDARD	CRITERIA
ADHESIVE ANCHORS, REINFORCING STEEL ANCHORED INTO HARDENED CONCRETE	TENSION TEST	ASTM E188	TEST THE INSTALLATION OF THE FIRST 1/3 OF EACH TYPE, BASE MATERIAL, AND POSITION DOWN HORIZONTAL OVERHEAD. OBSERVE ASTM E188 MINIMUM EDGE DISTANCE FOR DETERMINING TEST RESULTS. VERIFY TYPICAL PLACEMENT OF CONCRETE
		ASTM E188	TEST THE INSTALLATION OF THE FIRST 1/3 OF EACH TYPE, BASE MATERIAL, AND POSITION DOWN HORIZONTAL OVERHEAD. OBSERVE ASTM E188 MINIMUM EDGE DISTANCE FOR DETERMINING TEST RESULTS. VERIFY TYPICAL PLACEMENT OF CONCRETE
ADHESIVE ANCHORS, REINFORCING STEEL ANCHORED INTO HARDENED CONCRETE	TENSION TEST	ASTM E188	TEST THE INSTALLATION OF THE FIRST 1/3 OF EACH TYPE, BASE MATERIAL, AND POSITION DOWN HORIZONTAL OVERHEAD. OBSERVE ASTM E188 MINIMUM EDGE DISTANCE FOR DETERMINING TEST RESULTS. VERIFY TYPICAL PLACEMENT OF CONCRETE
		ASTM E188	TEST THE INSTALLATION OF THE FIRST 1/3 OF EACH TYPE, BASE MATERIAL, AND POSITION DOWN HORIZONTAL OVERHEAD. OBSERVE ASTM E188 MINIMUM EDGE DISTANCE FOR DETERMINING TEST RESULTS. VERIFY TYPICAL PLACEMENT OF CONCRETE

DESIGN CRITERIA			
1. GENERAL	1. GENERAL	1. GENERAL	1. GENERAL
2. REINFORCING MATERIALS	2. REINFORCING MATERIALS	2. REINFORCING MATERIALS	2. REINFORCING MATERIALS
3. REINFORCING FABRICATION	3. REINFORCING FABRICATION	3. REINFORCING FABRICATION	3. REINFORCING FABRICATION
4. SUBMITTALS	4. SUBMITTALS	4. SUBMITTALS	4. SUBMITTALS

DEFERRED SUBMITTALS			
1. GENERAL	1. GENERAL	1. GENERAL	1. GENERAL
2. REINFORCING MATERIALS	2. REINFORCING MATERIALS	2. REINFORCING MATERIALS	2. REINFORCING MATERIALS
3. REINFORCING FABRICATION	3. REINFORCING FABRICATION	3. REINFORCING FABRICATION	3. REINFORCING FABRICATION
4. SUBMITTALS	4. SUBMITTALS	4. SUBMITTALS	4. SUBMITTALS

GENERAL NOTES			
1. GENERAL	1. GENERAL	1. GENERAL	1. GENERAL
2. REINFORCING MATERIALS	2. REINFORCING MATERIALS	2. REINFORCING MATERIALS	2. REINFORCING MATERIALS
3. REINFORCING FABRICATION	3. REINFORCING FABRICATION	3. REINFORCING FABRICATION	3. REINFORCING FABRICATION
4. SUBMITTALS	4. SUBMITTALS	4. SUBMITTALS	4. SUBMITTALS





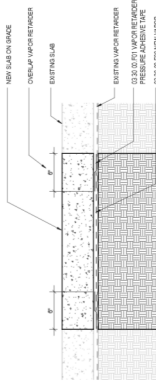
TA FEATURES	WORK NOTES
TA-2a	110 ROLL PAPER TOWEL DISPENSER, SURFACE MOUNTED
TA-4a	110 ULO-50-50P DISPENSER, SURFACE MOUNTED
	110 EXISTING CARD READER
	110 SALVAGED SIGNAGE, TYP
	110 EXISTING AIR FLOW MONITOR
	110 EXISTING PUMP, 1/2 HP, BASE
	115 EXISTING PUMP, 3/4 HP
	110 SALVAGED FOLD DOWN DESK, 4000
	117 RELOCATED DATA OUTLET, NOISES FROM H-PAFF TO 6-PAFF
	1001 BARRIER, END CAP
	1001 SERVICE VALVES, BIG, MFR PROVIDED
	2001 1/2 IN. SINK WITH HAND-POPE, FICAL OPERATION
	2001 1/2 IN. SINK WITH HAND-POPE, FICAL OPERATION
	2002 FINISHED GAS CONNECTION TO BGC BY CONTRACTOR, RE PLUMBING

Owner

Architect

**Structural Engineer**

**MEP Engineer**

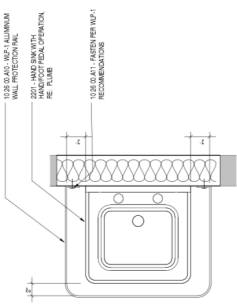
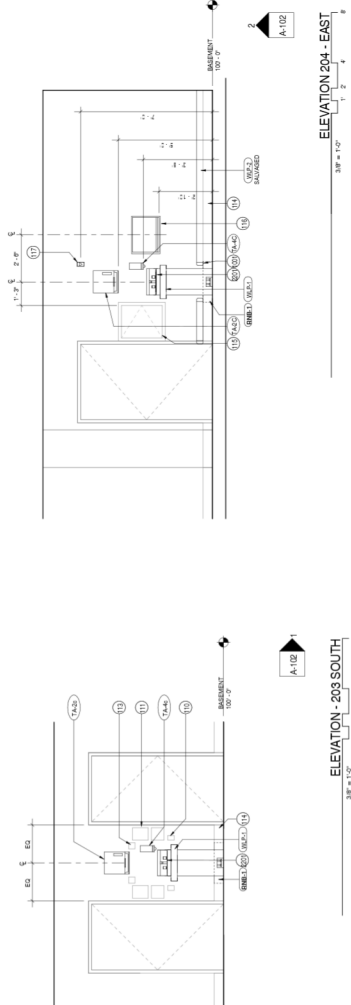


Date	Log
10/10/00	10.0
10/11/00	10.1
10/12/00	10.2
10/13/00	10.3
10/14/00	10.4
10/15/00	10.5
10/16/00	10.6
10/17/00	10.7
10/18/00	10.8
10/19/00	10.9
10/20/00	11.0
10/21/00	11.1
10/22/00	11.2
10/23/00	11.3
10/24/00	11.4
10/25/00	11.5
10/26/00	11.6
10/27/00	11.7
10/28/00	11.8
10/29/00	11.9
10/30/00	12.0
10/31/00	12.1
11/01/00	12.2
11/02/00	12.3
11/03/00	12.4
11/04/00	12.5
11/05/00	12.6
11/06/00	12.7
11/07/00	12.8
11/08/00	12.9
11/09/00	13.0
11/10/00	13.1
11/11/00	13.2
11/12/00	13.3
11/13/00	13.4
11/14/00	13.5
11/15/00	13.6
11/16/00	13.7
11/17/00	13.8
11/18/00	13.9
11/19/00	14.0
11/20/00	14.1
11/21/00	14.2
11/22/00	14.3
11/23/00	14.4
11/24/00	14.5
11/25/00	14.6
11/26/00	14.7
11/27/00	14.8
11/28/00	14.9
11/29/00	15.0
11/30/00	15.1
12/01/00	15.2
12/02/00	15.3
12/03/00	15.4
12/04/00	15.5
12/05/00	15.6
12/06/00	15.7
12/07/00	15.8
12/08/00	15.9
12/09/00	16.0
12/10/00	16.1
12/11/00	16.2
12/12/00	16.3
12/13/00	16.4
12/14/00	16.5
12/15/00	16.6
12/16/00	16.7
12/17/00	16.8
12/18/00	16.9
12/19/00	17.0
12/20/00	17.1
12/21/00	17.2
12/22/00	17.3
12/23/00	17.4
12/24/00	17.5
12/25/00	17.6
12/26/00	17.7
12/27/00	17.8
12/28/00	17.9
12/29/00	18.0
12/30/00	18.1
12/31/00	18.2

Project Number:

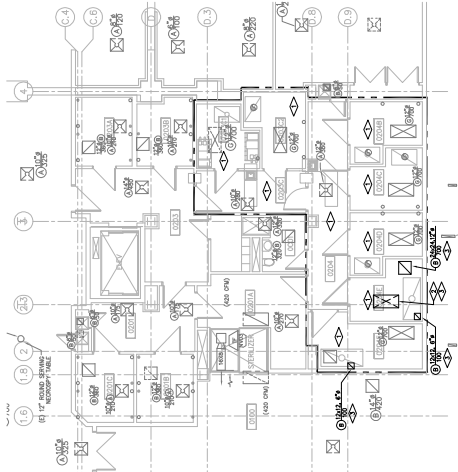
**SCHEDULES, ELEVATIONS & DETAILS**

**A-102**



PLAN DETAIL - SANI-RAIL® HAND SINK

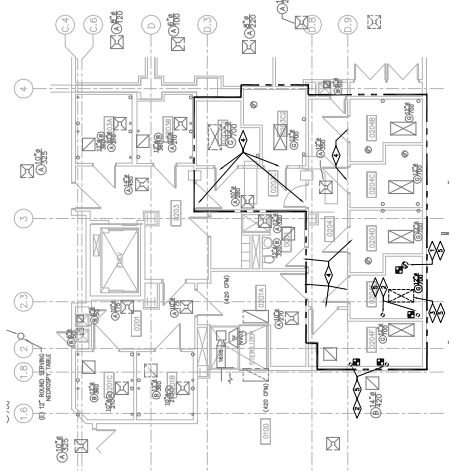




BASEMENT HVAC DEMO PLAN  
SCALE: 1/8"=1'-0"

DEMO KEY NOTES:

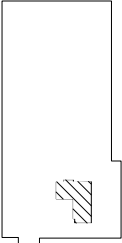
1. REMOVE AIR-TO-AIR CONNECTION TO BAC.
2. REMOVE RISER DUCT AND DUCT.
3. REMOVE EXISTING CEILING DIFFUSER, BLANKET FOR RE-USE.
4. REMOVE EXISTING CEILING DIFFUSER, BLANKET FOR RE-USE.
5. COORDINATE WITH ELEC FOR FLOODING, PUMPING, CHANGING, ETC. OF
6. COORDINATE WITH ELEC FOR FLOODING, PUMPING, CHANGING, ETC. OF



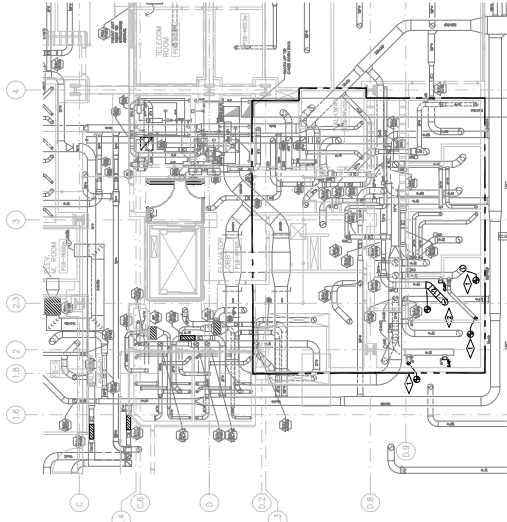
BASEMENT HVAC PLAN  
SCALE: 1/8"=1'-0"

NEW KEY NOTES:

1. REMOVE AIR-TO-AIR CONNECTION TO BAC.
2. REMOVE RISER DUCT AND DUCT.
3. REMOVE EXISTING CEILING DIFFUSER, BLANKET FOR RE-USE.
4. REMOVE EXISTING CEILING DIFFUSER, BLANKET FOR RE-USE.
5. COORDINATE WITH ELEC FOR FLOODING, PUMPING, CHANGING, ETC. OF
6. COORDINATE WITH ELEC FOR FLOODING, PUMPING, CHANGING, ETC. OF



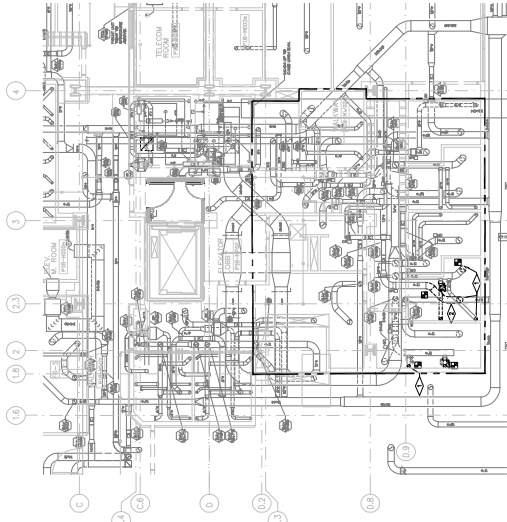
NORTH BLDG  
KEY PLAN



INTERSTITIAL HVAC DEMO PLAN  
SCALE: 1/8"=1'-0"

DEMO KEY NOTES:

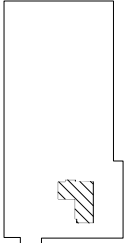
- REMOVE EXISTING OF EXISTING DUCT TO HELP FOR INSTALLATION OF NEW DUCT.
- EXISTING DUCT TO BE REMOVED TO RELIEVE THE SUPPLY DIFFUSER.



INTERSTITIAL HVAC PLAN  
SCALE: 1/8"=1'-0"

NEW KEY NOTES:

- CONNECT EXISTING EXHAUST DUCT TO NEW BACK-PAN OF NEW EXHAUST FAN.
- CONNECT EXISTING OF SUPPLY DUCT TO RELOCATED DIFFUSER.



NORTH BLDG  
KEY PLAN





